

# Uniden®

## XDECT R006

---

*For more exciting new products please visit our website:*

*Australia: [www.uniden.com.au](http://www.uniden.com.au)*

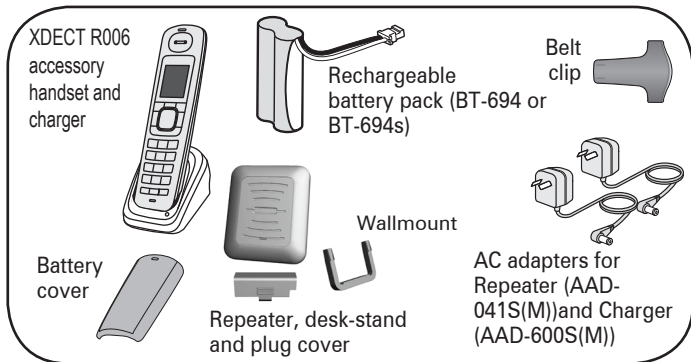
*New Zealand: [www.uniden.co.nz](http://www.uniden.co.nz)*

---

# OWNER'S MANUAL

# XDECT R006 Accessory Handset Owner's Manual

## **What's in the box?**



**If any items are missing or damaged, contact your place of purchase. Never use damaged products!**

**Need Help? Get answers at our website:**

**[www.uniden.com.au](http://www.uniden.com.au) for Australian model or [www.uniden.co.nz](http://www.uniden.co.nz) for New Zealand model.**

## **Important Safety Instructions!**

When using your telephone equipment, basic safety precautions should always be followed to reduce the risk of fire, electric shock and injury to persons, including the following:

- **This unit is NOT waterproof.** DO NOT expose this unit to rain or moisture.
- Do not use this product near water, for example, near a bath tub, wash bowl, kitchen sink or laundry tub, in a wet basement or near a swimming pool.
- Avoid using a telephone (other than a cordless type) during an electrical storm. There may be a remote risk of electric shock from lightning.
- Do not use the telephone to report a gas leak in the vicinity of the leak.
- Use only the power cord and batteries indicated in this manual. Do not dispose of batteries in a fire. They may explode. Check with local codes for possible special disposal instructions.
- Do not place the handset in any charging cradle without the battery installed and the battery cover securely in place.

---

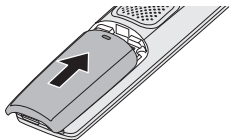
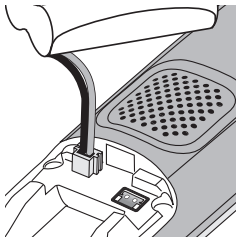
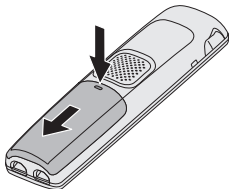
**SAVE THESE INSTRUCTIONS!**

---

# Setting Up Your Handset

## Install the Battery

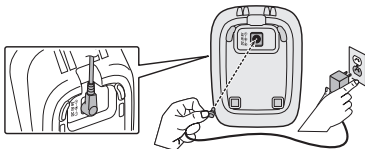
1. Unpack the handset, battery pack, and battery cover. If the battery cover is already on the handset, press in on the notch and slide the cover down and off.
2. Line up the battery pack connector with the jack inside the handset. (The battery connector only fits one way.)
3. Push the battery pack connector in until it clicks into place. Tug gently on the wires to make sure the battery pack is securely connected.



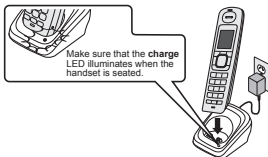
4. Place the cover over the battery compartment and slide it up into place.

## Connect the Charger

1. Connect the AC adapter to the charger's **DC IN 9V** jack and route the cord as shown. (This adapter might already be connected.)
2. Plug the other end of the adapter into a standard 240V AC power outlet.



3. Place the handset in the charger with the display facing forward.  
The **CHARGE** light should turn on.



If...	Try...
the <b>CHARGE</b> light does not turn on	<ul style="list-style-type: none"><li>- reseating the handset.</li><li>- checking the AC adapter connection.</li></ul>

**Charge the handset completely (about 15 hours) before using it.**

## Registering the Handset

The accessory handset will not work until you register it to a base! Registering the handset is a separate process from registering the Repeater. You can use the handset normally even if the repeater is not registered.

### **Compatible bases**

This handset is designed for use with Uniden's XDECT R055 base. For the most up-to-date list of compatible bases for this handset, see our website.

### **Register the handset**

Place the handset in the base. The display should say *Handset Registering*.

**After about 30 seconds, the handset display should say *Registration Complete*.**

### **Test the connection**

Pick up the handset and press **TALK**. Make sure you get a dial tone. (Press **END** to hang up.)

If...	Try...
<ul style="list-style-type: none"><li>- you don't hear a dial tone</li><li>- the display says <i>Registration Failed</i></li></ul>	Making sure the handset is fully charged, then trying again.

## Attaching the Belt Clip

Line up the holes on each side of the handset. Insert the belt clip into the holes on each side of the handset. Press down until it clicks. To remove the belt clip, pull either side of the belt clip to release the tabs from the holes.

---

# Using the Repeater

## How it Works

The XDECT R006 repeater works to extend the range of the XDECT R055 base in just the same way as the repeater/charger unit. The only difference is the XDECT R006 repeater and handset-charger are separate units. Refer to your XDECT R055 owner's manual page 8 for more information on how repeaters work.

- ◆ To use the repeater function, you must register the repeater to an XDECT R055 base. (Any repeaters that came packaged with the base are already registered to that base for you.)
- ◆ An XDECT R055 base can support up to six XDECT R006 repeaters, including any that were supplied with your phone.
- ◆ Usually, you can't tell when a handset switches between the base and the repeater in the middle of a call, but sometimes, you might notice a brief pause in your conversation.

## Connect the Repeater

- ◆ Connect the AC adapter to the repeater's **DC IN 9V** jack and route the cord as shown (This adapter might already be connected).
- ◆ Place the repeater Plug Cover over the plug section and slide into place. Plug the other end of the adapter into a standard 240V AC power outlet.



## Registering the Repeater

**Registering the Repeater is a separate process from registering the handset.**

1. On the base, open the menu and select *Register Handset*.
2. On the bottom of the repeater, press and hold the registration button until the **LINK** light starts to blink (about 2 seconds).
3. Release the button and wait for the **LINK** light to turn on and steady (this can take about 90 seconds).



If the **LINK** light doesn't turn on, disconnect

the repeater's AC adapter. Wait about ten seconds, then try these steps again.

Some important things to remember:

- ◆ Only register one repeater at a time. If more than one repeater is in registration mode at the same time, they can interfere with each other.
- ◆ If you want to use the repeater with a different base, just register the repeater to the new base. The repeater automatically erases the link to the old base when it registers to the new one.
- ◆ Only register repeaters to one base at a time. If more than one base is in registration mode at the same time, you can't control which base the repeater registers to.

## Placing the Repeater

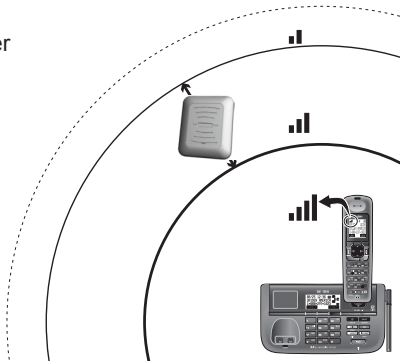
Here are a few tips for placing your repeater so that you get the clearest signal and the maximum range:

- ◆ Make sure you have good reception from the base.
- ◆ Put the repeater **at least 10m** away from the base or any other repeater. (If you put the repeater on a different floor from the base, don't forget to allow 10m vertically, also.)
- ◆ If possible, mount the repeater on the wall.

## ***Picking the best spot***

The best spot for the repeater is as far from the base as possible while still maintaining a good signal, or near the edge of the base's coverage area. To find the edge of the coverage area:

1. Stand near the base and make a call on the handset.
2. While on the call, carry the handset away from the base towards the general area where you want to put the repeater.
3. Watch the signal strength icon on the handset. Make a note where the icon drops from 4 bars to 3 bars.
4. Continue walking away from the base. Make a note where the signal strength icon drops from 3 bars to 2 or if you start to hear noise on the line (which indicates the signal is getting weaker).
5. Place the repeater anywhere inside the range where the signal strength icon showed 3 bars and the handset had a clear signal with no noise.



## ***Testing the location***

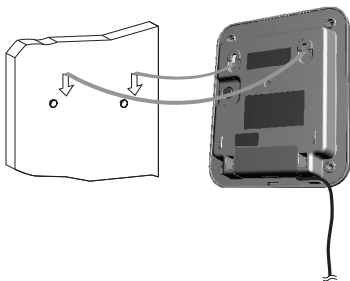
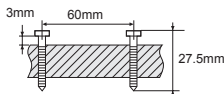
Connect the repeater's AC adapter and make sure the **LINK** light comes on steadily. If the light flashes, the repeater is not getting a good signal from the base. The repeater may be too far away from the base, there may be interference from electronic devices, or the signal might be blocked by thick walls or metal objects. Try moving the repeater to another location.

## Wall Mounting the Repeater

You can mount the repeater directly to a wall using the horizontally aligned mounting slots at the back of the repeater unit. Before doing this consider the following:

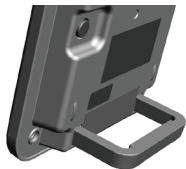
- ◆ Avoid electrical cables, pipes, or other items behind the mounting location that could cause a hazard when inserting screws into the wall.
- ◆ Mount the repeater within distance of a working 240V AC power outlet.
- ◆ If mounting onto an outside wall, note that the repeater is splashproof **ONLY** from the front side. **DO NOT** expose the back of the repeater to outside weather conditions.

1. Insert supplied two screws into the wall, 60 mm apart. (For best results, use a level to ensure the screws are even.) Remember to use appropriate anchors for the wall material.
2. Keeping the AC adapter cord out of the way, place the repeater over the screw heads and slide it down into place.



## Desk Mount the Repeater

You can also desk mount the repeater by inserting the desk mount stand into the slots at the back of the unit.



---

# Important Information

## Handling Liquid Damage

Moisture and liquid can damage your cordless phone.

- ◆ If the handset, repeater, or charger is exposed to moisture or liquid, but only the exterior plastic housing is affected, wipe off the liquid, and use as normal.
- ◆ If moisture or liquid has entered the plastic housing (i.e. liquid can be heard in the phone or liquid has entered the handset battery compartment or vent openings on the base), follow these steps:

Handset	Repeater or charger
<ol style="list-style-type: none"><li>1. Remove the battery cover and disconnect the battery.</li><li>2. Let dry for at least 3 days with the battery disconnected and the cover off for ventilation.</li><li>3. After the handset dries, reconnect the battery pack and replace the cover. Recharge the battery fully (15-20 hours) before using.</li></ol>	<ol style="list-style-type: none"><li>1. Disconnect the AC adapter to cut off the power.</li><li>2. Let dry for at least 3 days before reconnecting.</li></ol>

**IMPORTANT:** You must unplug the telephone line while recharging the battery pack to avoid charge interruption.

---

***CAUTION! DO NOT use a microwave oven to speed up the drying process. This will cause permanent damage to the handset, base and the microwave oven.***

---

## Specifications

AC adapter	Part number	AAD-041S(M) / AAD-600S(M)
	Input voltage	240V AC, 50Hz
	Output voltage	9V DC@ 350mA / 9V DC@210mA
Battery pack	Part number	BT-694 or BT-694s
	Capacity	650mAh (BT-694) or 500mAh (BT-694s)

- ◆ Use only the supplied AC adapters.
- ◆ Be sure to use the proper adapter for the base and any repeater or charger.
- ◆ Do not place the power cord where it creates a trip hazard or where it could become chafed and create a fire or electrical hazard.
- ◆ Do not place the unit in direct sunlight or subject it to high temperatures.

## Battery Information

- ♦ Fully charged, the battery should provide about 8 hours of talk time and about 7 days of standby time. For best results, return the handset to the cradle after each call to keep it fully charged.
- ♦ Keep an eye on the battery status icon. When the battery gets too low, the handset shows a low battery alert. If you hear a strange beep during a call, check the display: if you see the low battery alert, finish your conversation as quickly as possible and return the handset to the cradle. If the handset is in standby, none of the keys will operate.
- ♦ With normal use, the battery should last about one year. Replace the battery when the talk time becomes short even when the battery is charged. To buy a replacement battery, visit the website; [www.uniden.com.au](http://www.uniden.com.au) for Australian model or [www.uniden.co.nz](http://www.uniden.co.nz) for New Zealand model.

---

### ***Rechargeable Nickel-Metal-Hydride Battery Warning***

***CAUTION! Risk of explosion if battery is replaced by an incorrect type! Dispose of used batteries according to the instructions. Do not open or mutilate the battery. Disconnect the battery before shipping this product.***

---

- ♦ This equipment contains a rechargeable Nickel-Metal-Hydride battery.
- ♦ The rechargeable batteries contained in this equipment may explode if disposed of in a fire.
- ♦ Do not short-circuit the battery.
- ♦ Do not charge the rechargeable battery pack used in this equipment with in any charger other than the one designed to charge this battery pack as specified in the owner's manual. Using another charger may damage the battery pack or cause the battery pack to explode.

**Rechargeable Batteries Must Be Recycled or Disposed of Properly.**

**Uniden works to reduce lead content in PVC coated cords in our products & accessories.**

---

## One-year Limited Warranty

**IMPORTANT** Satisfactory evidence of the original purchase is required for warranty service

Please refer to our Uniden website for any details or warranty durations offered in addition to those contained below.

### **Warrantor**

The warrantor is either Uniden Australia Pty Limited ABN 58 001 865 498 ("Uniden Aust") or Uniden New Zealand Limited ("Uniden NZ") as the case may be.

## **Terms of Warranty**

Uniden Aust/NZ warrants to the original retail purchaser only that the XDECT R006 ("the Product"), will be free from defects in materials and craftsmanship for the duration of the warranty period, subject to the limitations and exclusions set out below.

## **Warranty Period**

This warranty to the original retail purchaser is only valid in the original country of purchase for a Product first purchased either in Australia or New Zealand and will expire one (1) year from the date of the original retail sale.

If a warranty claim is made, this warranty will not apply if the Product is found by Uniden to be:

- (A) Damaged or not maintained in a reasonable manner or as recommended in the relevant Uniden Owner's Manual;
- (B) Modified, altered or used as part of any conversion kits, subassemblies or any configurations not sold by Uniden Aust or Uniden NZ;
- (C) Improperly installed contrary to instructions contained in the relevant Owner's Manual
- (D) Repaired by someone other than an authorized Uniden Repair Agent in relation to a defect or malfunction covered by this warranty; or
- (E) Used in conjunction with any equipment, parts or a system not manufactured by Uniden.

## **Parts Covered**

This warranty covers the Product and included accessories.

## **User-generated Data**

This warranty does not cover any claimed loss of or damage to user-generated data (including but without limitation phone numbers, addresses and images) that may be stored on your Product.

## **Statement of Remedy**

If the Product is found not to conform to this warranty as stated above, the Warrantor, at its discretion, will either repair the defect or replace the Product without any charge for parts or service. This warranty does not include any reimbursement or payment of any consequential damages claimed to arise from a Product's failure to comply with the warranty.

Our goods come with guarantees that cannot be excluded under the Australian Consumer Law. You are entitled to a replacement or refund for a major failure and for compensation for any other reasonably foreseeable loss or damage. You are also entitled to have the goods repaired or replaced if the goods fail to be of acceptable quality and the failure does not amount to a major failure.

This warranty is in addition to and sits alongside your rights under either the COMPETITION AND CONSUMER ACT 2010 (Australia) or the CONSUMER GUARANTEES ACT (New Zealand) as the case may be, none of which can be excluded.

## **Procedure for Obtaining Warranty Service**

Depending on the country in which the Product was first purchased, if you believe that your Product does not conform with this warranty, you should deliver the Product, together with satisfactory evidence of your original purchase (such as a legible copy of the sales docket) to Uniden at the addresses shown below. You should contact Uniden regarding any compensation that may be payable for your expenses incurred in making a warranty claim. Prior to delivery, we recommend that you make a backup copy of any phone numbers, images or other data stored on your Product, in case it is lost or damaged during warranty service.

### **UNIDEN AUSTRALIA PTY LTD**

Service Division  
345 Princes Highway,  
Rockdale, NSW 2216  
Phone number: 1300 366 895  
Email address: [custservice@uniden.com.au](mailto:custservice@uniden.com.au)

### **UNIDEN NEW ZEALAND LTD**

Service Division  
150 Harris Road, East Tamaki  
Auckland 2013  
Phone number: (09) 273 8377  
Email address: [service@uniden.co.nz](mailto:service@uniden.co.nz)

**Uniden<sup>®</sup>**

© 2011 Uniden Australia Pty Ltd/Uniden New Zealand Limited  
Printed in Vietnam UZZ01229BA(0)