

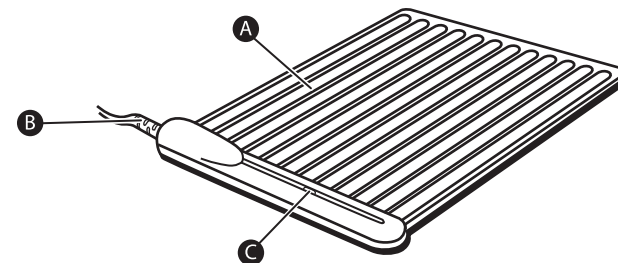
Uniden®



WPP15W
Wireless Power Pad

OWNER'S MANUAL

1 Wireless Power Pad Overview



- A. Device charging surface
- B. DC power plug
- C. Blue indicator light

2 Operation

Welcome to the world of wire-free power! Your Wireless Power Pad was designed to be extremely easy to set up and use. With proper care, your charging pad can deliver years of trouble-free operation.

SET UP

1. Place your Wireless Power Pad in your favourite location. Avoid placing on metallic objects or metal countertops as this may prevent the charging pad from turning on.
2. Insert the DC power plug firmly into the Wireless Power Pad.
3. Plug the AC adaptor into the wall outlet.

3 Operation - continued

CHARGING YOUR WIRELESS POWER PAD-ENABLED DEVICES

- Once the Wireless Power Pad is powered on, the blue indicator light will turn on immediately while the system status is checked. If the charge pad system is functioning properly and there is no fault detected (i.e. keys, metal object or a hand placed on the charge pad), then the blue indicator light will turn off in 3-5 seconds. You are now ready to charge your Wireless Power Pad-enabled devices. Simply place them on the Wireless Power Pad with the contact balls on the charging pad. The blue indicator light will light up to show that your device is receiving wireless power. If a fault is detected, the blue indicator light will (1) not appear upon initial power up or (2) turn off during operation.
- When not in use, the Wireless Power Pad will be in Sleep Mode. In this mode, the charging surface and the blue indicator light both turn off.
- You can simultaneously charge up to five Wireless Power Pad-enabled devices (cell phones, music players, cameras, etc.) on the Wireless Power Pad. Make sure that the devices are sitting flat on and making firm contact with the pad.
- For best results, keep the Wireless Power Pad clean and free of contaminants. Although designed for durability and years of trouble-free use, the original luster can be best maintained through proper care and maintenance.
- Make sure to place only Wireless Power Pad-enabled devices on the pad. Devices that are not compliant will not receive power from the Wireless Power Pad.
- Non-compliant devices will not be damaged but will not receive power from the Wireless Power Pad.

4 Maintenance and Usage

- The AC wall outlet shall be located near the Wireless Power Pad and should be easily accessible.
- The DC power plug is designed to fit snugly into the Wireless Power Pad and should be inserted firmly to make a good electrical connection.
- The Wireless Power Pad can charge up to five Wireless Power Pad-enabled devices (cell phones, music players, camera, etc.). However, certain devices or combination of devices may require more power than is available. When this happens, the indicator light will blink. Remove some devices to remedy this problem.
- Ensure that dirt or other contaminants are not on the Wireless Power Pad. Charging will not occur if proper contact between the Wireless Power Pad-enabled device and charging pad is not made.
- Ensure that the device is resting flatly on the Wireless Power Pad. Charging will not occur if the device being charged is in a tipped position and proper contact is not made.

5 Caution!

- The WPP15W Wireless Power Pad is not represented as waterproof. Please read and adhere to the instructions in the Care and Maintenance section of this manual.
- Changes or modifications not expressly approved by the party responsible for compliance could void the user's authority to operate the equipment.

6 Troubleshooting Guide

The following table lists potential problems and their suggested solutions:

Problem	Cause	Solution
Blue indicator light does not turn on when a device is placed on the Wireless Power Pad.	The device is not Wireless Power Pad-enabled. The Wireless Power Pad will only power devices that are Wireless Power Pad compatible.	Place only Wireless Power Pad-enabled devices on the Wireless Power Pad.
	Device is not resting properly on Wireless Power Pad surface.	Ensure that device is resting flatly on and is making good contact with the Wireless Power Pad surface. Also, clean pad surface if needed.
	DC power plug not firmly plugged into charging pad or AC adapter not plugged into wall socket.	Ensure AC adapter is plugged into a working outlet and DC power plug is firmly inserted into the Wireless Power Pad.
	Wireless Power Pad is resting on a metallic surface.	Move the Wireless Power Pad to a non-metallic surface.
Device does not indicate (cell phone display) charging when placed on the Wireless Power Pad.	Metallic objects such as keys or coins may be on the charging pad.	Remove metal objects and charging will resume normally.
	Device is not resting properly on the Wireless Power Pad surface.	Ensure that device is resting flatly on (contact balls down) and is making good contact with the Wireless Power Pad surface. Also, clean pad surface if needed.
Blue indicator light continuously blinks on and off (devices do not charge).	Overload condition; too many devices are resting on the charging pad at one time.	Remove devices, one at a time, until blinking stops. Keep in mind that, in most instances, the Wireless Power Pad can simultaneously charge up to five devices.

7 Care and Maintenance

- To maintain the original luster and protect the charging pad finish, do not spill liquids or set heavy objects on your Wireless Power Pad.
- Food, dirt, dust, and other contaminants can easily be wiped away with an ammonia-based cleaner, or isopropyl alcohol. Never submerge the Wireless Power Pad in water or place in a dishwasher.

WIRELESS POWER PAD SAFETY WARNING

- NOT DISHWASHER SAFE
- DO NOT IMMERSE IN WATER. KEEP AWAY FROM SINKS AND TUBS.

8 Technical Specifications

Max Number of Devices:	5 (15W max)
Dimensions:	171.45mm (6.75") W x 203.20mm (8.5") L x 19.05mm (0.75") H
Power input:	100 - 240 VAC, 0.4 Amps, 50 - 60 Hz
Power output:	15 Watts max
Weight:	113g (4.0 oz.)
Certifications:	UL, CE, FCC

9 One Year Limited Warranty

UNIDEN WPP15W WIRELESS POWER PAD

Important: Evidence of original purchase is required for warranty service.

Warrantor: Uniden Australia Pty Limited A.B.N. 58 001 865 498 / Uniden New Zealand Limited

Warranty only available in original country of purchase.

ELEMENT OF WARRANTY: Uniden warrants to the original retail owner for the duration of this warranty, its WPP15W Wireless Power Pad (herein after referred to as the Product), to be free from defects in materials and craftsmanship with only the limitations or exclusions set out below.

WARRANTY DURATION: This warranty to the original retail owner only, shall terminate and be of no further effect One (1) year after the date of original retail sale. This warranty will be deemed invalid if the Product is; (A) Damaged or not maintained as reasonable and necessary, (B) Modified, altered or used as part of any conversion kits, subassemblies, or any configurations not sold by Uniden, (C) Improperly installed, (D) Repaired by someone other than an authorized Uniden Repair Agent for a defect or malfunction covered by this warranty, (E) Used in conjunction with any equipment or parts or as part of a system not manufactured by Uniden, or (F) Where the Serial Number label of the product has been removed or damaged beyond recognition. Warranty only valid in the country of original retail/sale.

PARTS COVERED: This warranty covers for One (1) year, the Product and included accessories.

STATEMENT OF REMEDY: In the event that the Product does not conform to this warranty at any time while this warranty is in effect, the warrantor at its discretion, will repair the defect or replace the Product and return it to you without charge for parts or service. This warranty does not provide for reimbursement or payment of incidental or consequential damages. This EXPRESS WARRANTY is in addition to and does not in any way affect your rights under the TRADE PRACTICES ACT 1974 (Cth) (Australia) or the CONSUMER GUARANTEES ACT (New Zealand).

PROCEDURE FOR OBTAINING PERFORMANCE OR WARRANTY: In the event that the Product does not conform to this warranty, the Product should be shipped or delivered, freight pre-paid, with evidence of original purchase (e.g. a copy of the sales docket), to the warrantor at:

**UNIDEN AUSTRALIA PTY LIMITED
SERVICE DIVISION**
345 Princes Highway, Rockdale NSW 2216
Fax (02) 9599 3278
www.uniden.com.au

**UNIDEN NEW ZEALAND LIMITED
SERVICE DIVISION**
150 Harris Road, East Tamaki, Manukau 2013
Fax (09) 274 4253
www.uniden.co.nz

© 2009 Uniden Australia Pty. Limited/Uniden New Zealand Limited. Printed in PRC.

Uniden®

6.4 in (162.5mm)

4.4in (111.7mm)

Notice to User
 Uniden will not be responsible for any damage, including consequential damage caused by defective goods, personal injuries, property damage or consequential economic loss.

Uniden does not guarantee suitability of its product for your application. Furthermore, Uniden will not be responsible for any damage, loss of data, service or otherwise caused to the phone or device when used with this product.

panel C

Support/Warranty
www.uniden.com.au
www.uniden.co.nz

Uniden

© 2009 Uniden Australia Pty. Limited
 Uniden New Zealand Limited. Printed in PRC.

back panel (F)

Uniden

WPD D800
 Wireless Power Pad
 Device Adaptor
 Power Disc

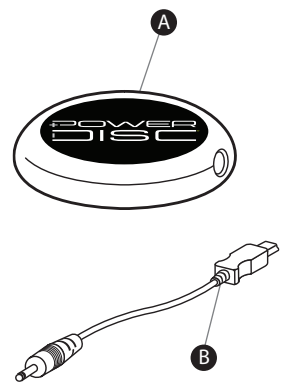
WildCharge
WIRELESS CHARGING

QUICK START GUIDE

front panel (A)

Side A

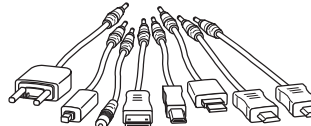
Overview



A. Power Disc
 B. Interchangeable Tip (link)


panel B

Step 1
 Select the correct tip for your mobile device.



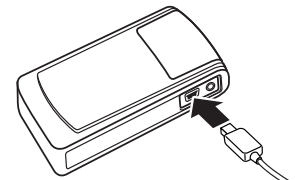
For additional information about interchangeable tips, please visit www.uniden.com.au

Step 2
 After selecting the proper tip, insert the appropriate end of the link into the Power Disc.



panel D

Step 3
 Insert the opposite end of the link into your mobile device's charging port.



Operation
 Place the Power Disc onto the Wireless Power Pad. A blue indicator light will appear on the top of the pad and on the side of the disc when power is being provided to your mobile device.

You are now experiencing wire-free charging.

panel E

Side B

Design Notes:

File: Power Disc_R3

Date: Oct 27, 2009

Re-Author: M Palamo

Support/Warranty
www.uniden.com.au
www.uniden.co.nz

Uniden[®]

© 2009 Uniden Australia Pty. Limited
Uniden New Zealand Limited. Printed in PRC.

Uniden[®]

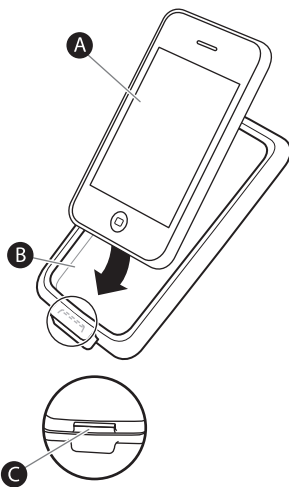
WPSiP Wireless Power Pad Device Adaptor for iPhone

Compatible with
all iPhone models



QUICK START **GUIDE**

1 Overview



- A. iPhone
- B. Wireless Power Pad Device Adaptor (Skin)
- C. Connector plug

2 Installation

1. Carefully insert the iPhone into the Skin, first making sure the connector plug (C) seats firmly in place.
2. Use your fingers to stretch the Skin over the top of the iPhone.
3. You are now ready to enjoy wire-free charging.



3 Operation

1. Place the Wireless Power Pad enabled iPhone on to the Wireless Power Pad making sure it rests fully on the pad.
2. The blue indicator light appears on the Wireless Power Pad when the iPhone is being charged.
3. You are now experiencing wire-free charging.

Uniden®

Wireless Power Pad and Device Adaptors



SAFETY INFORMATION

Uniden®

© 2009 Uniden Australia Pty. Limited
Uniden New Zealand Limited. Printed in PRC.

Safety Information

Note: Some Wireless Power Pad products, such as Device Adaptors, contain magnets to ensure firm electrical contact between the charging device and the charge pad. These magnets are located near the backside of the charging device.

Pacemakers

Major manufacturers of pacemakers recommend that a minimum separation of six (6) inches (15.3 centimetres) be maintained between any household item with magnets and a pacemaker to avoid potential interference with the pacemaker.

Persons with pacemakers:

- Should ALWAYS keep magnets more than six (6) inches (15.3 centimetres) from their pacemaker
- Should not carry magnets in a breast pocket
- Should use the ear opposite the pacemaker to minimize the potential interference

Hearing Aids

Some magnets may interfere with some hearing aids. In the event of such interference, you may want to consult your hearing aid manufacturer or physician to discuss alternatives.

Other Medical Devices

If you use any other personal medical device, consult your physician or the manufacturer of your device to determine if it is adequately shielded from external magnetic fields. Your physician may be able to assist you in obtaining this information.

Choking Hazards

Your mobile device accessory may include detachable parts, which may present a choking hazard to small children. Keep your mobile device accessories away from small children.