

TRAX CENTRAL INSTALLATION GUIDE

System requirements

To use Trax Central, you need a computer that has a USB port and meets the following minimum specifications.

To access the Trax Central server, you also need an active Internet connection on your PC.

	Minimum	Recommended
Operating system	Windows XP	Windows Vista
Processor	300 MHz clock speed	Intel Pentium/Celeron family, or AMD K6/Athlon/Duron family, or compatible processor
System memory	256 MB	512 MB
Free disk space	2 GB	5 GB

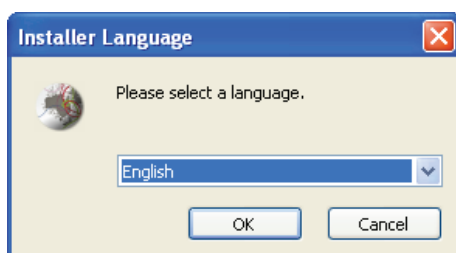


NOTE: In order to install new contents on your device from the Trax Central server, you need an active Internet connection on your PC! Installing content items previously backed up from your computer or from an inserted content DVD is possible without an Internet connection.

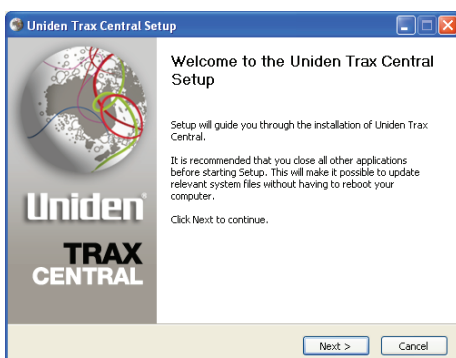
1.1 Installing Trax Central

Follow these steps to install Trax Central on your computer:

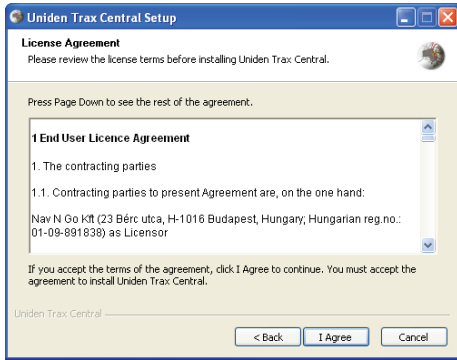
1. First locate and run the installer application:
 - Visit <http://www.uniden.com.au/traxcentral.asp> to download the latest Trax Central to your PC. Download the file and run the installer.
2. Select a language from the list, then click **OK**.



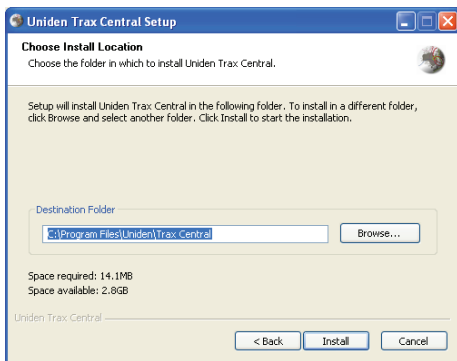
3. Read the welcome page, and click **Next** to continue.



4. Review the licence agreement. If you want to continue, click **I Agree**.

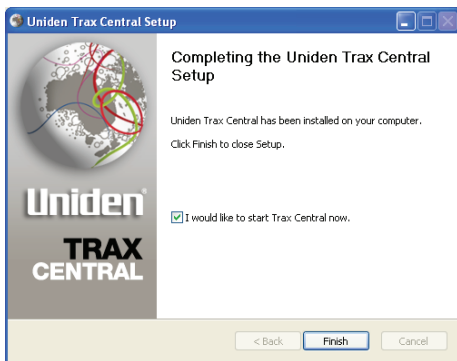



5. Select the installation folder. A default installation folder is already given. To choose a different one, type in the path name, or click **Browse**, and select a different folder.




6. Click **Install** to start the copying process. To see the details during copying, click **Show Details**.

7. (optional) Trax Central is automatically started right after the installation. To avoid this, clear the checkbox.



 **NOTE:** Trax Central will not start up if a TRAX device is not connected to your PC.

8. The installation is complete, click **Finish** to exit.

 **NOTE:** Trax Central has an auto-updating feature to ensure you always have the most up-to-date version on your PC. Each time you launch the application, it checks for available updates.
