

# Uniden®

## HD6000

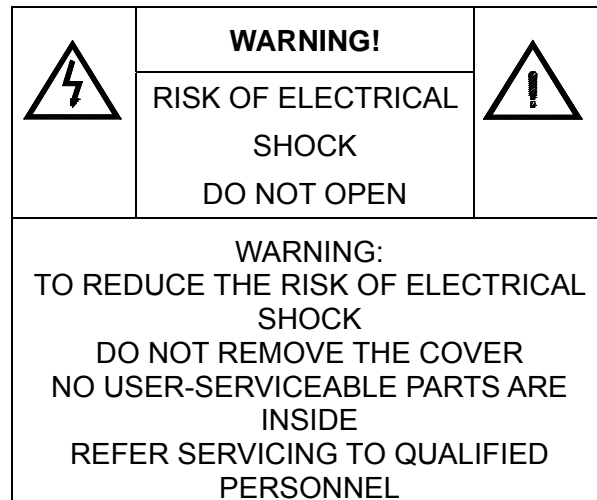
HIGH DEFINITION DIGITAL RECEIVER  
Set Top Box with Freeview™ EPG





# OWNER'S MANUAL


# Safety First

Please review the following safety precautions. If this is your first time to use a digital receiver, then read this manual before installing or using this receiver. If the receiver is not functioning properly, please contact your local distributor or system installer.



 The lightning symbol in a triangle is used to alert you to the presence of dangerous voltages inside the receiver that may be sufficient to constitute a risk of electric shock to anyone opening the case. It is also used to indicate improper installation or handling of the receiver that could damage the electrical system in the receiver or in other equipment attached to the receiver.

 The exclamation point in a triangle is used to alert you to important operating and maintenance instructions. Failure to follow these instructions could result in injury to you or damage to the receiver.

 *Be careful with electricity:*

- **Power outlet:** To prevent electric shock, make sure the electrical plug used on the receiver's power cord matches the electrical outlet used to supply power to the receiver. Connect the power cord only to a power source that operates at 100~240 Volts AC, 50/60 Hz.
- **Power plug:** If a three-prong power plug is provided with the receiver, make sure it is used with a properly grounded three-wire power socket.
- **Power cord:** Make sure the power cord is routed so that it will not be stepped on or pinched by heavy items.
- **Power overloading:** Avoid overloading electrical outlets or extension cords, which otherwise could result in electric shock or fire.
- **Lightning:** For protection from lightning, or when the receiver is left unattended for a long period, disconnect it from the power source.
- **Protect other equipment:** Unplug the receiver before connecting any other equipment, especially the antenna. Connect all equipment to the receiver before plugging any power cords to the power source.



*Also follow these precautions:*

- **Ventilation:** Do not block the ventilation slots on the receiver, or place any heavy object on top of it. Blocking the airflow could damage the receiver. Arrange components so that air can flow freely around the receiver. Ensure that there is adequate ventilation if the receiver is placed in a stand. Put the receiver in a properly ventilated area, away from direct sunlight or any source of heat.
- **Overheating:** Avoid stacking the receiver on top of a hot component such as a power amplifier.
- **Risk of Fire:** Do not place the receiver on top of any easily combustible material, such as carpet or fabric.
- **Proper Connections:** Make sure all cables and equipment are connected to the receiver as described in this manual.
- **Object Entry:** To avoid electric shock, never stick anything in the slots on the case or remove the cover.
- **Water Exposure:** To reduce the risk of fire or electric shock, do not expose the receiver to rain or moisture.



- **Plastic Protective Film:** Receivers when shipped have a protective thin plastic film over the Front Panel; this plastic film should be removed and discarded.

#### ©Trademark Information



Manufactured under license from Dolby Laboratories, “Dolby” and the double-D symbol are trademarks of Dolby Laboratories.



HDMI, the HDMI logo and High-Definition Multimedia Interface are trademarks or registered trademarks of HDMI Licensing LLC.



DVB and the DVB logo are registered trademarks of the DVB project.

# Table of Contents

---

---

Safety First.....	1
Table of Contents .....	3
Introduction .....	4
<i>Package Contents</i> .....	4
<i>Key Features</i> .....	5
Parts of the Uniden HD6000 System.....	6
<i>Front Panel</i> .....	6
<i>Rear Panel</i> .....	7
Remote Control.....	8
System Installation.....	10
Connecting to TV Monitor and Audio & Video Devices.....	10
Aspect Ratio Setting .....	11
<i>Recommended Settings</i> .....	11
Switching on for the First Time .....	12
Viewing Channels .....	13
<i>The Information Plate (or I-Plate)</i> .....	13
Freeview EPG: Electronic Programme Guide .....	15
Main Menu Map .....	16
Main Menu .....	17
<i>Channels</i> .....	17
<i>Settings</i> .....	18
<i>Setup</i> .....	21
<i>System</i> .....	23
Trouble Shooting.....	27
Glossary.....	29
Product Specification: .....	31
One Year Limited Warranty .....	32

## Introduction

The Uniden **HD6000** Set-Top-Box is an MPEG-4 compliant High Definition (HD) receiver, capable of receiving high definition and standard definition (SD) TV programmes from free-to-air terrestrial broadcasts (DVB-T) in accordance with the Freeview specification.

The user friendly On-Screen-Display (OSD) allows you to setup your receiver to enjoy both high and standard definition channels with crystal clear picture and stereo sound quality.

## Package Contents

Unpack the receiver and verify that all of the following items are included.



*If any items are missing or damaged, contact your place of purchase immediately.*

- HD6000 High Definition (HD) MPEG-4 Terrestrial Receiver
- Remote Control Unit (with 2x AAA batteries)
- Owner's manual
- AC adapter
- Composite (RCA) Video/Audio Cable

## Key Features

- **On Screen Display (OSD):**

Easy to use Menu system displays key information on screen.

- **Remote Control:**

Fully functional Remote Control.

- **MHEG5 Electronic Programme Guide (EPG):**

7 day Freeview Electronic Programme Guide.

- **Video and audio connection capabilities:**

HDMI, Composite Video and Audio (left/right) and S/PDIF (digital audio out) connections.

- **Simultaneous HD/SD output**

Connect HDMI to an HDTV for HD and at the same time connect composite to a standard TV for SD.

- **DVB Compliant:**

Decodes MPEG-2 and MPEG-4/AVC formats.

- **Multiple Video Format Modes:**

HD - 1080i/720p, SD - 576p/576i.

- **Multiple Aspect Ratio Modes:**

16:9, 4:3 Letter Box and 4:3 Centre Cut.

Includes Active Format Descriptor (AFD) modes;

AFD 16:9 Wide, AFD 4:3 Letter Box and AFD 4:3 Centre Cut.

- **Channel Locked Function**

Parental Rating with PIN code access.

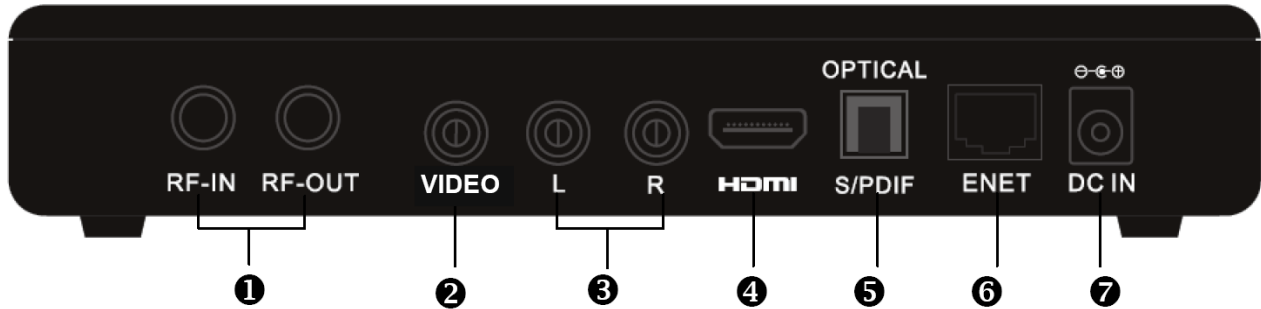
## Parts of the Uniden HD6000 System

### Front Panel



- ① Power button:**  
Toggles the HD6000 between power-on (green LED) and standby (red LED) modes.
- ② Channel button:**  
Switch to the next channel.
- ③ Channel button:**  
Switch to the previous channel.

## Rear Panel



**1 RF In/ RF Out:**

RF Input for an external antenna/RF Out (loop through) for an external device.

**2 Video Out: Composite Video:**

For Standard Definition Televisions - Connect the Composite Video cable to the yellow coloured video jack.

**3 Audio Out: L/R:**

For use with the Composite Video outputs.

**4 HDMI:**

For connection to an HDTV which has HDMI input for optimum viewing capability. HDMI output supports 1080i, 720p, 576p and 576i video formats and supports Dolby down-mix 2 channel audio.

**5 S/PDIF Optical:**

Digital audio output for connection to an amp lifier equipped with a Dolby Digital decoder.

**6 ENET:**

Feature not available.

**7 Power Supply:**

Power Adapter DC5V 3A input (100~240 VAC, 50~60 Hz).

## Remote Control

The remote control provides easy access to all of the receiver's functions, including selecting channels and using the menus. It uses infrared signals, and must be operated within seven meters from the receiver.

When using the remote control, make sure there is a direct line of sight to the receiver.



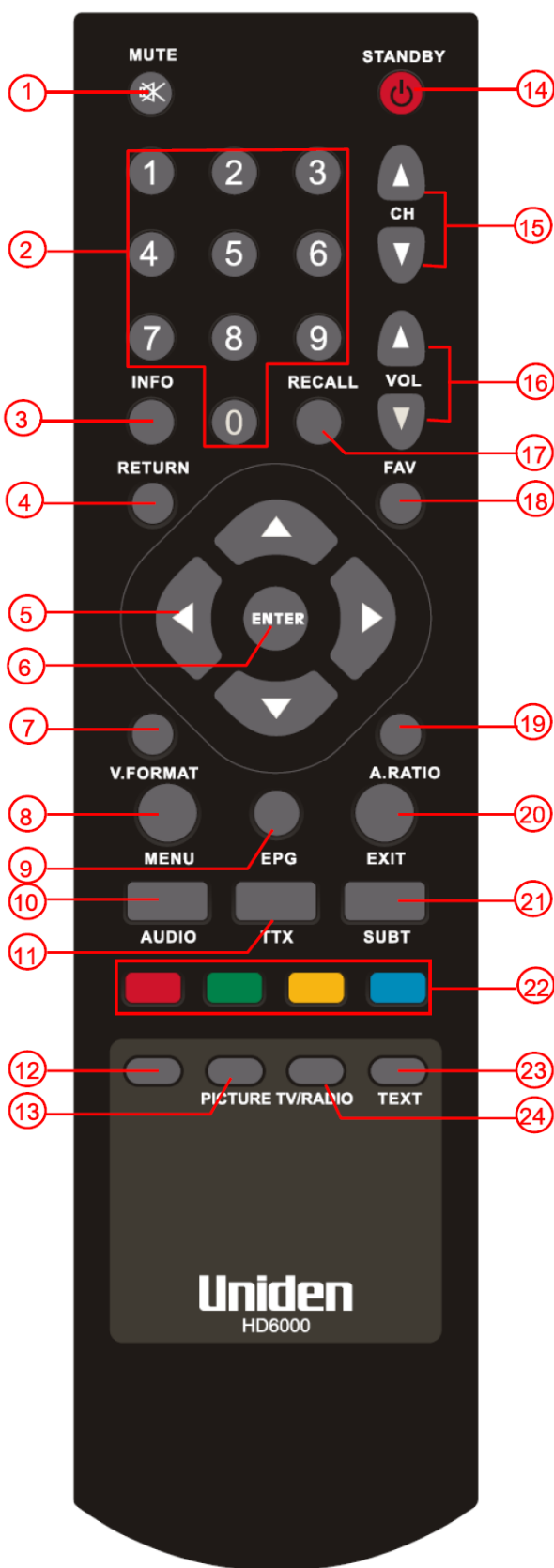
**NOTE**

*Although the receiver can be operated from the buttons on the front panel, many of the receiver's functions can only be accessed using the remote control.*

The batteries for the remote control are packaged separately; please install these batteries in the remote control before using the receiver. Note the "+" and "-" signs on the batteries to ensure that the batteries are inserted with the correct polarity into the remote control. To avoid damage to the remote control, discard any depleted or old batteries.



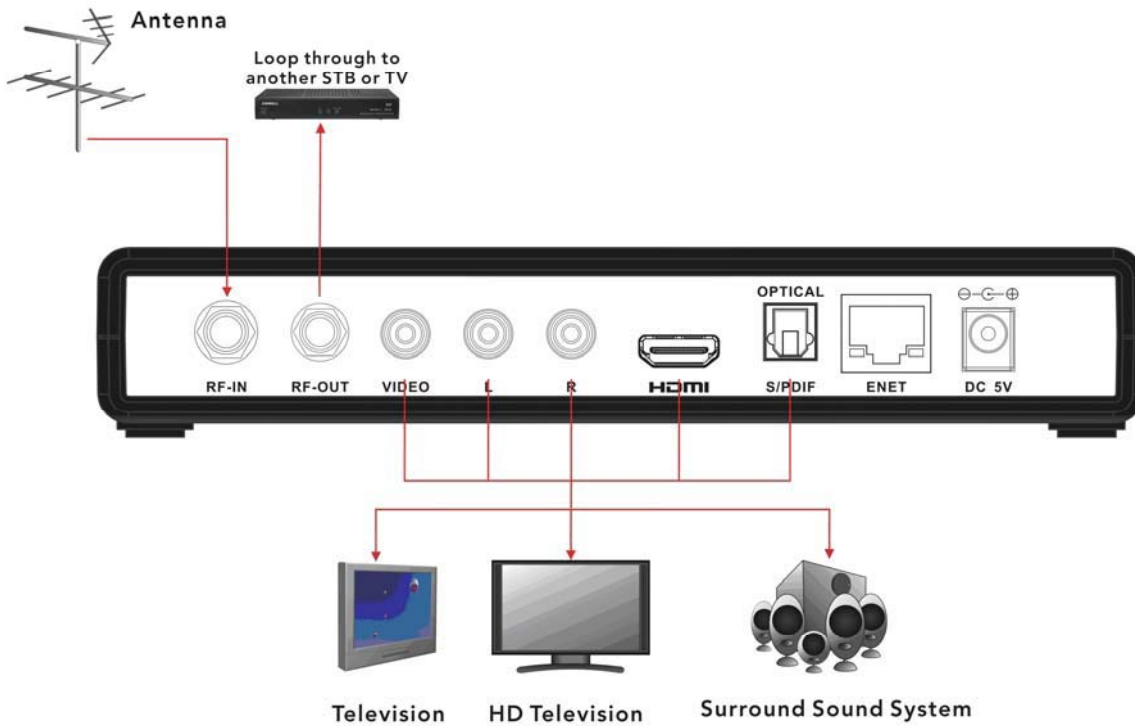
The buttons on the remote control have the following functions:



1. **MUTE:** Disable and enable MUTE on the current programme.
2. **Numeric:** For entering channel number or PIN code.
3. **INFO:** Open I-PLATE/Now/Next Information
4. **RETURN:** Back to previous page in OSD.
5. **Directional buttons:** Move the cursor or field in the ▲▼◀▶ direction.
6. **ENTER:** Selects the highlighted item.
7. **V.FORMAT:** Switch Video Format between PAL / 576P / 720P / 1080i .
8. **MENU:** Open MAIN MENU window.
9. **EPG:** Display the EPG (Electronic Programme Guide).
10. **AUDIO:** Switch between different languages or audio types if available (MPEG / AC3).
11. **TTX:** Switch Teletext OFF/ON.
12. **No function.**
13. **PICTURE:** Adjust picture setup (brightness, contrast, saturation, hue, sharpness and Digital Noise Reduction).
14. **STANDBY:** Switch the set top box OFF/ON.
15. **CH:** Channel controls; previous and next.
16. **VOL:** Audio volume; increase or decrease.
17. **RECALL:** Toggle between current and previous channels.
18. **FAV:** Open Favorite Channel List window.
19. **A. RATIO:** Switch Aspect Ratio between 16:9 / AFD 16:9 Wide / 4:3 Letter Box / 4:3 Centre Cut/ AFD 4:3 Letter Box and AFD 4:3 Centre Cut.
20. **EXIT:** To exit display mode (and watch TV).
21. **SUBT:** For DVB subtitle if available.
22. **Colour buttons:** Perform various functions which are shown in the menu.
23. **TEXT:** Enable MHEG5 function
24. **TV/RADIO:** Change between TV and radio channels.

# System Installation

## Connecting to TV Monitor and Audio & Video Devices



## Aspect Ratio Setting

Digital TV broadcasts carry a mixture of widescreen (16:9) and standard (4:3) format programmes.

Under new guidelines, all new TV sets will have an ex-factory default setting which makes the set follow the broadcaster's transmitted picture format codes. The Active Format Descriptor (AFD) code will allow some view preferences to operate automatically, but only those which the broadcaster has catered for in making the programme. For example, it will allow a viewer to fill the screen of a 4:3 TV set with the centre portion of a widescreen picture, but only for programmes 'shot and protected' to allow for this, so that cutting off the edges won't lose important action in the scene.

## Recommended Settings

The HD6000 offers the following options through the **A.Ratio** (aspect ratio) button on the remote control:

- 4:3 Letter Box
- 4:3 Centre Cut
- 16:9 Wide (factory default)
- Full screen
- AFD 4:3 Letter Box
- AFD 4:3 Centre Cut
- AFD 16:9 Wide

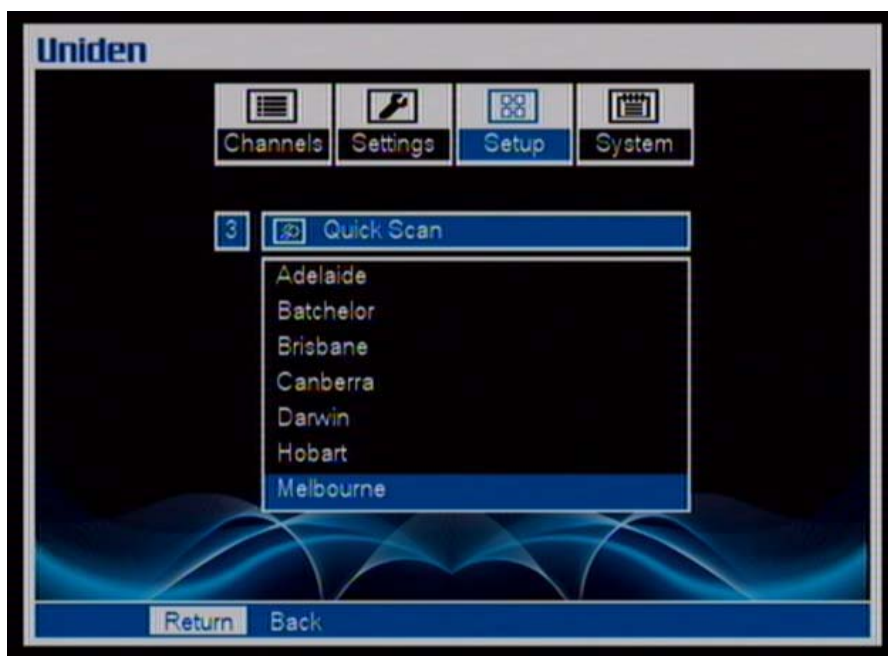
The view option **AFD 4:3 Letter Box** is interpreted as a best compromise for the various formats.

Recognising that viewers may not always be satisfied with the broadcaster's recommended display format or choice of formats, TV sets may also have a 'viewer preference' setting, in which the viewer's wishes override that of the broadcaster, the viewer will have to select these other modes deliberately.

## Switching on for the First Time

Your HD6000 needs to be tuned to channels in your region. When it is connected and switched on for the first time the HD6000 will start in Quick Scan mode.

1. Turn on your TV set.
2. Turn on the HD6000 by pressing the power key on the front panel or pressing **STANDBY** on the remote control. The green ON LED will light up.
3. The “Quick Scan” menu will appear. Use the directional keys ▲, ▼, ◀ and ▶ on the remote control to highlight your region and then press **ENTER** to automatically scan and place into memory all services transmitted in your region.



4. When the receiver states “Scan Complete” press **EXIT**.
5. Digital television programmes are then received.



**NOTE**

*If Quick Scan does not automatically appear, press **MENU** then use directional keys ▲, ▼, ◀ and ▶ to navigate to "Setup" and highlight "Quick Scan" and press **ENTER**. Then follow from step 3 above.*

*If a channel is not found during “Quick Scan” it may be new or changed. Navigate to “Setup” and then highlight “Auto Scan” and press **ENTER** to search for channels.*

## Viewing Channels

Use the Channel keys or enter the channel number on the remote control to change channels.

### The Information Plate (or I-Plate)

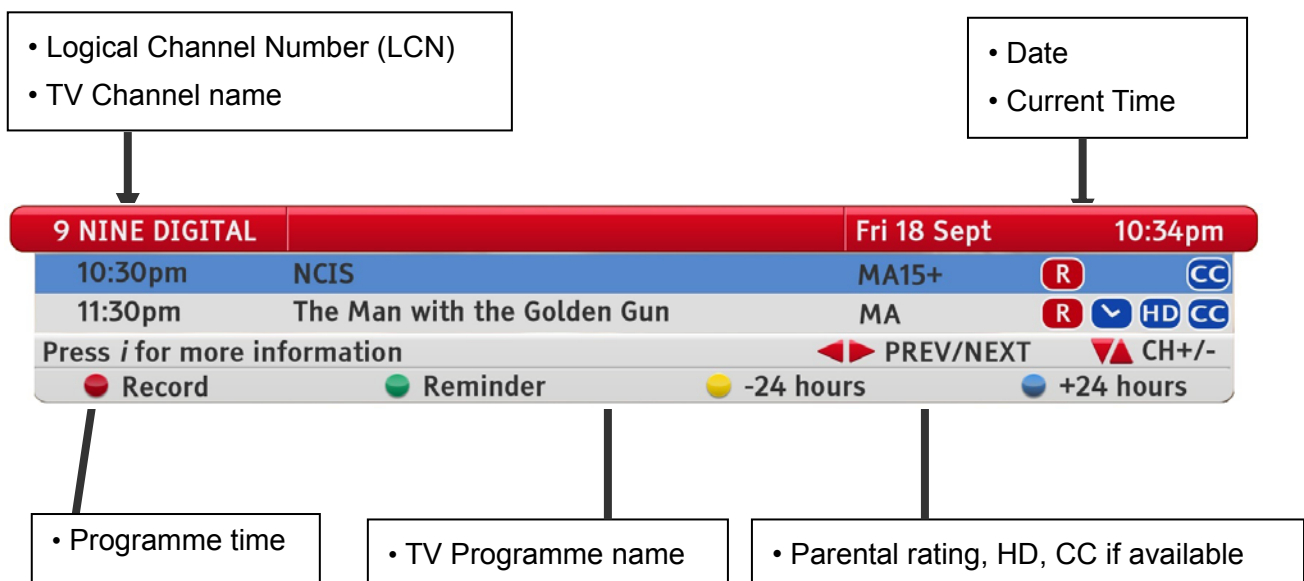
The I-Plate appears at the bottom of the screen whenever a channel is changed or when called up by pressing **INFO**. The I-Plate displays information about the channel and the current TV programme. Press **▶** to view the next programme's information (Next) and then press **◀** to go back to the current programme's information (Now). Press **▲▼** to navigate across all channels, and view their respective information; press **ENTER** to watch the selected channel. If available, press the corresponding colour key to activate an option shown at the bottom of the I-Plate.

#### Example I-Plate

9 NINE DIGITAL		Fri 18 Sept		10:34pm	
10:30pm	NCIS	MA15+	R	CC	
11:30pm	The Man with the Golden Gun	MA	R	▼	HD CC
Press <i>i</i> for more information			◀▶	PREV/NEXT	▲▼
● Record	● Reminder	● -24 hours	● +24 hours		

- The I-Plate automatically displays for a short period whenever a channel is changed.
- You can also press **INFO** to display the I-Plate.
- If the selected channel supports special features such as Parental Rating, High Definition (HD) or Closed Captions (CC), then this information will be displayed in the I-Plate.
- While the I-Plate is showing, press **INFO** on the remote control to bring up a synopsis of the programme.

#### I-Plate



## Viewing Teletext Subtitles

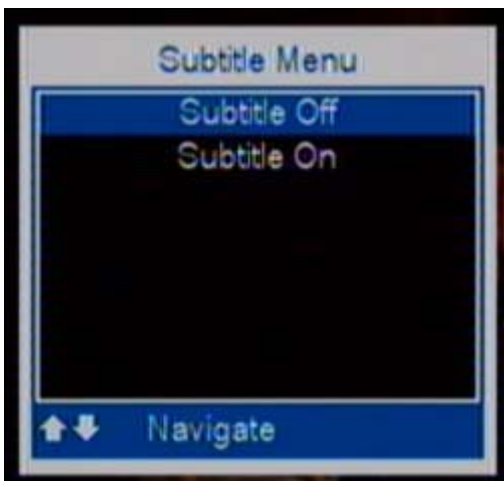
Some channels carry Teletext (TTX) and with it some programmes may have Teletext subtitles.



- Press **TTX** and enter 801 to activate subtitles (captions) provided by Teletext.
- To adjust the Teletext subtitles background colour, press **TTX**. Press **TTX** again to clear the Teletext screen.

## Selecting Subtitle Tracks

Some programmes are broadcast with subtitle tracks in one or more languages.



- Press **SUBT**, the subtitle menu will display on your screen. Once you select a subtitle track, the subtitle will be displayed.

# Freeview EPG: Electronic Programme Guide

This HD6000 can display the 7-day Freeview Electronic Programme Guide (EPG).

Never miss your favorite TV programmes with the reminder feature. Simply select an upcoming TV program and press GREEN to activate the reminder function. Just before the show is about to start, a reminder will pop-up on screen, providing the option to select the programme or remove the reminder pop-up.



You can navigate (▲, ▼, ◀ and ▶) to programme times throughout the EPG.

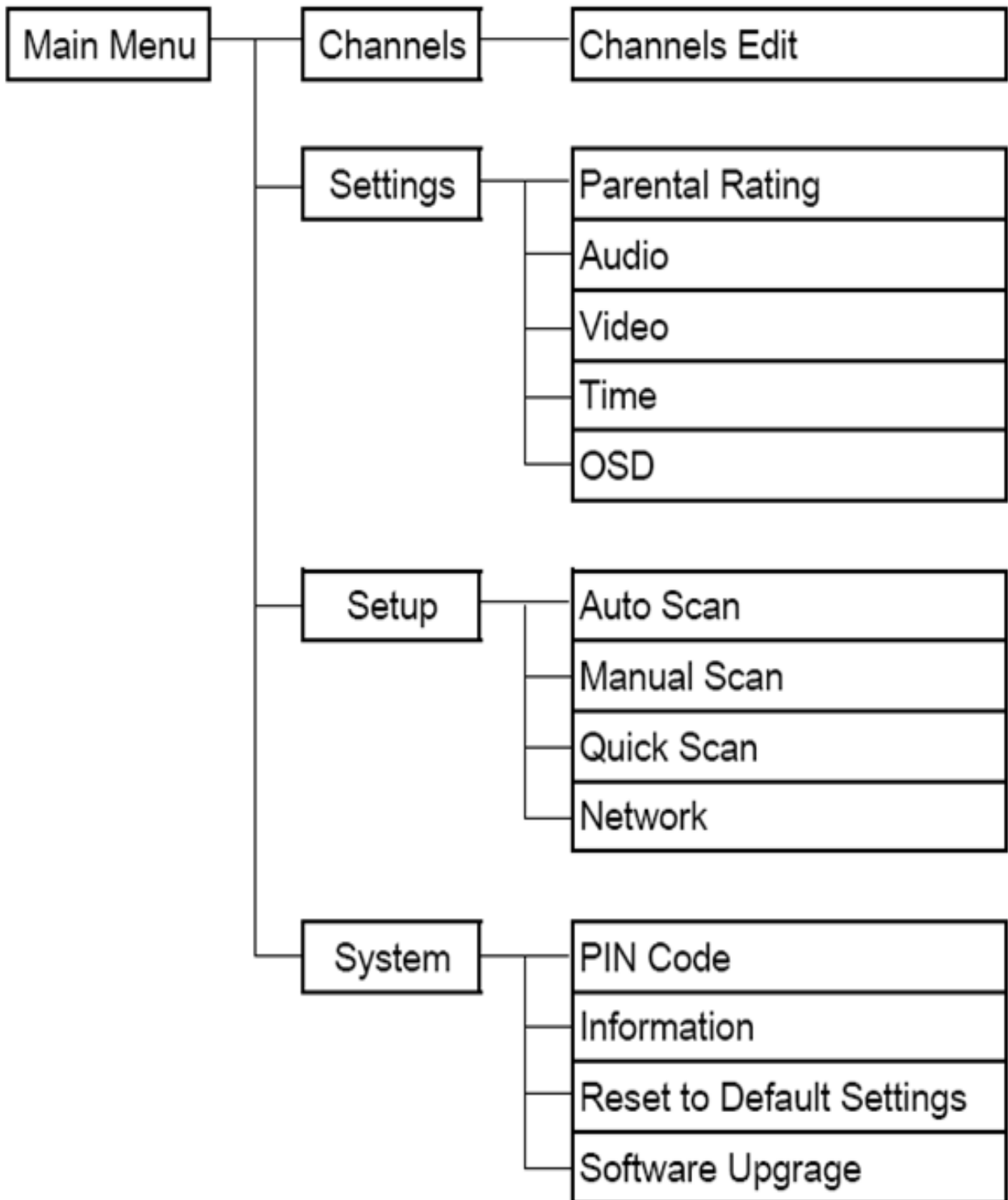
- **Red** Key: Record. (Function not available for HD6000)
- **Green** Key: Reminder.
- **Yellow** Key: Back 24 hours.
- **Blue** Key: Forward 24 hours.

Press **INFO** to view the selected programme's synopsis.

A typical pop-up reminder:



*In some areas the Freeview EPG covers many markets and initial download times may take a few minutes.*

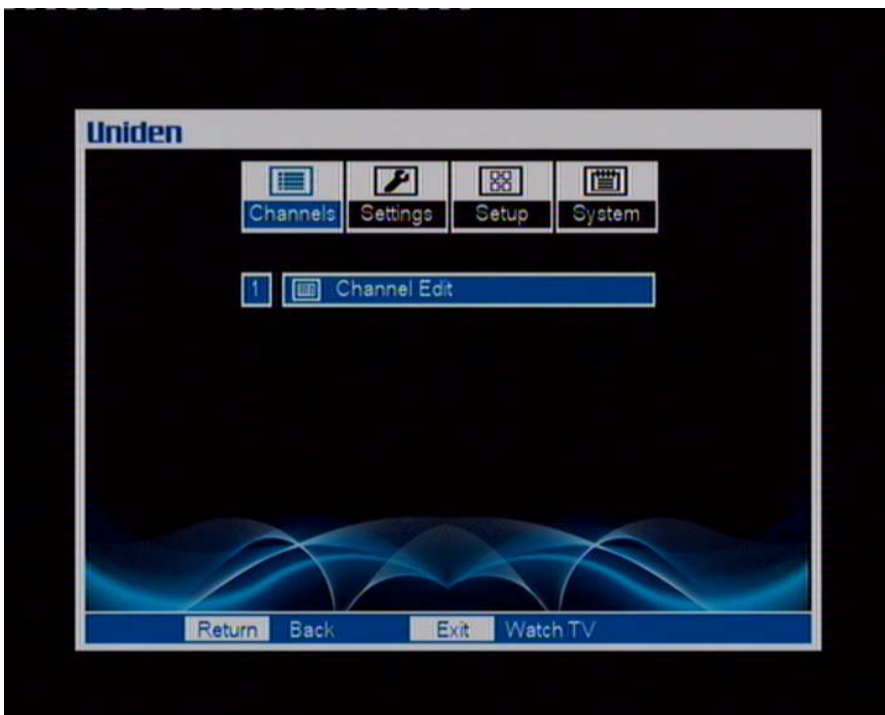


## Main Menu

Press **MENU** to display the Main Menu screen. Use the directional keys **▲**, **▼**, **◀** and **▶** to move through the menu and press **ENTER** to select the chosen option.

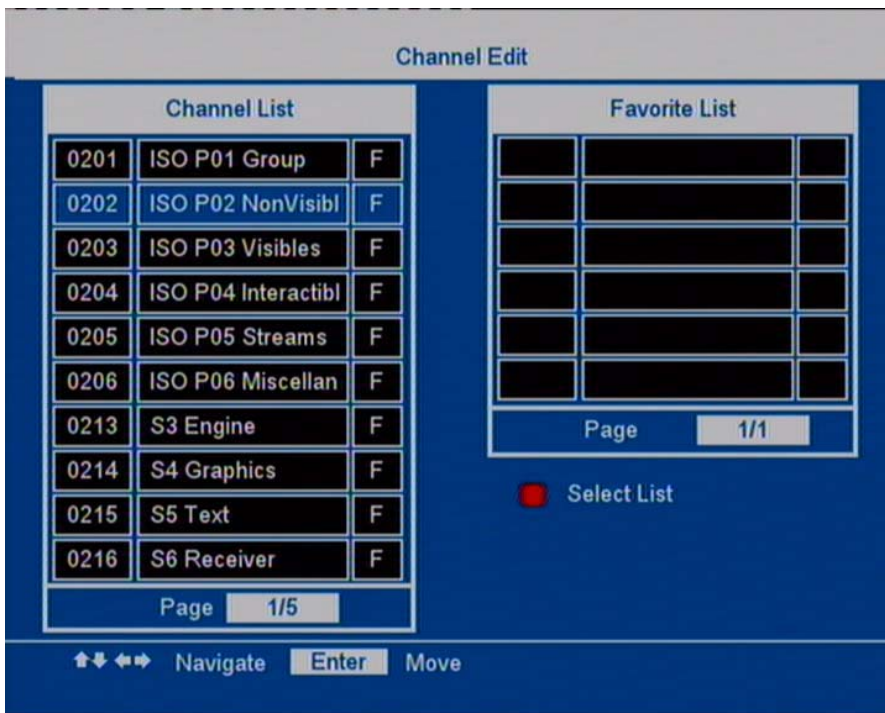


## Channels



## Channel Edit:

Channel Edit allows you to manage your favourite channels.



Use the ▲ ▼ ◀ and ▶ to highlight options and press **ENTER** to assign channels to the Favourite List or remove from the Favourite List.

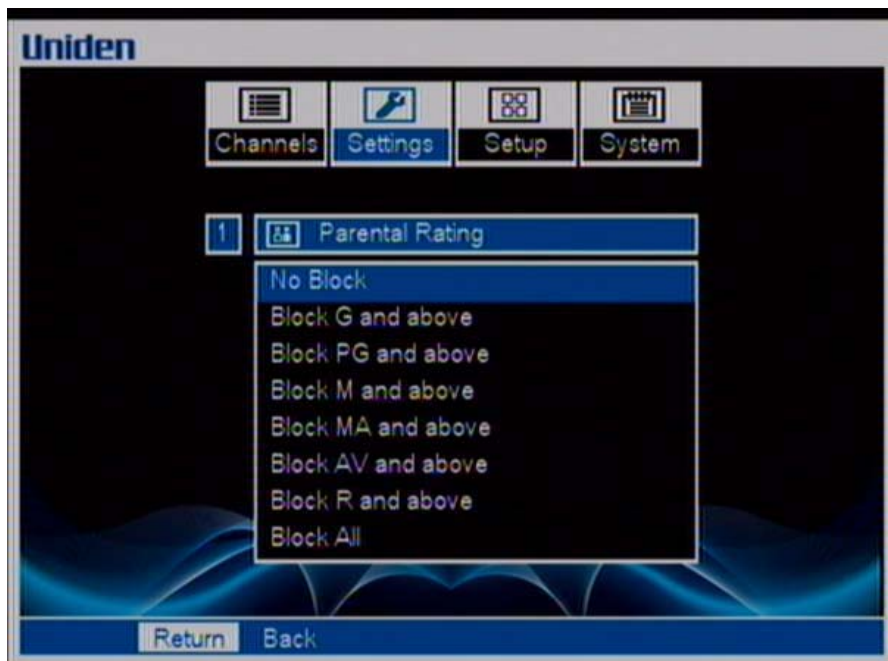
- **Red key:** Change the Channel List between all channels, transponder channels or favourite channels.

## **Settings**



### **Parental Rating :**

Allows you to set a parental rating for a channel to prevent your children from viewing sensitive channels.



Once you set the parental rating for the particular channel, the parental rating transmitted with the channel will verify if the received rating is higher than the parental lock rating.

A pop-up message will show that the channel is locked. To see the channel, you have to enter the PIN code before viewing the channel.

### **Audio :**

The Audio menu allows you to setup the following formats:



- Audio Language (English only)
- SPDIF Output: Allows you to choose between PCM or Dolby output to other devices.
- Audio Preference: Allows you to choose between Mpeg and Dolby as the preferred format for current viewing.
- Default Volume: Adjust the volume to your preference.

### Video :

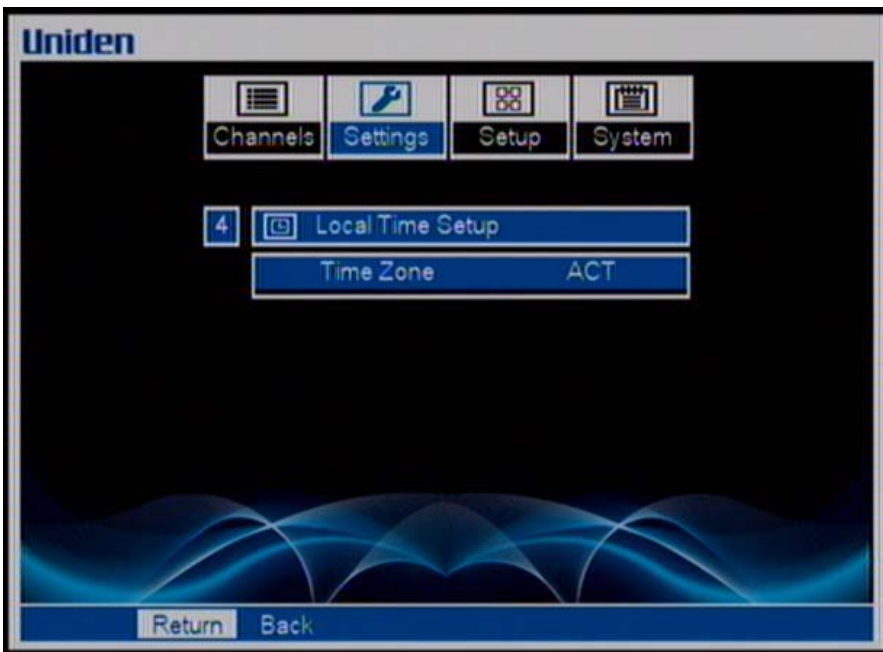
The Video menu allows you to setup the following formats:



- HD Video Format: PAL/576p/720p/1080i
- Aspect Ratio: 16:9, AFD 16:9 Wide, Full screen, 4:3 Letter Box, 4:3 Centre Cut, AFD 4:3 Letter Box and AFD 4:3 Centre Cut
- Picture Setup: Brightness, Contrast, Saturation, Hue, Sharpness and DNR (Digital Noise Reduction)

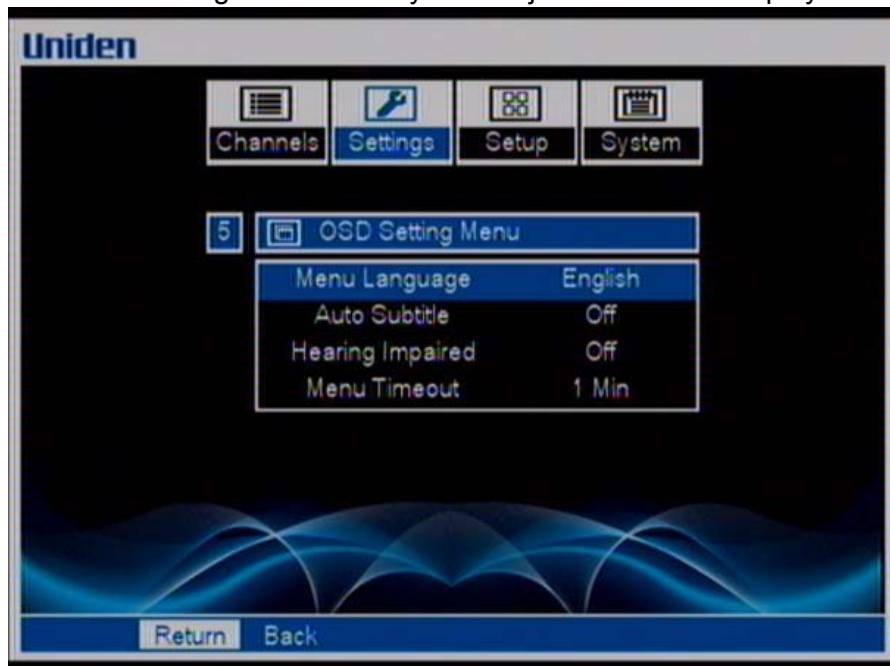
### Time:

The Local Time Setup menu allows you to setup the following local time format:



## On Screen Display (OSD):

The OSD Setting Menu allows you to adjust the screen display features from the following;



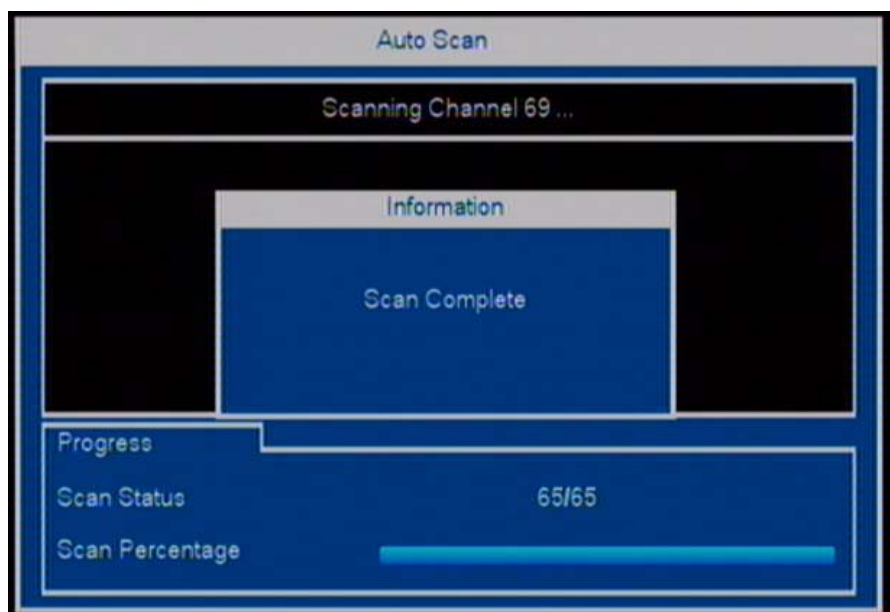
- I-Plate: The I-Plate is shown every time the channel changes or after pressing **INFO**. Select to adjust the timeout period.
- Menu Language: (English only)
- Auto Subtitle: Enabling this setting automatically shows subtitles in programmes if available.
- Hearing Impaired: Enabling this setting automatically shows sound subtitles for the hearing impaired if available.
- Menu Timeout: Timeout interval for OSD menus.

## **Setup**

**Note:** The default PIN code of this receiver is 0000.

### Auto Scan:

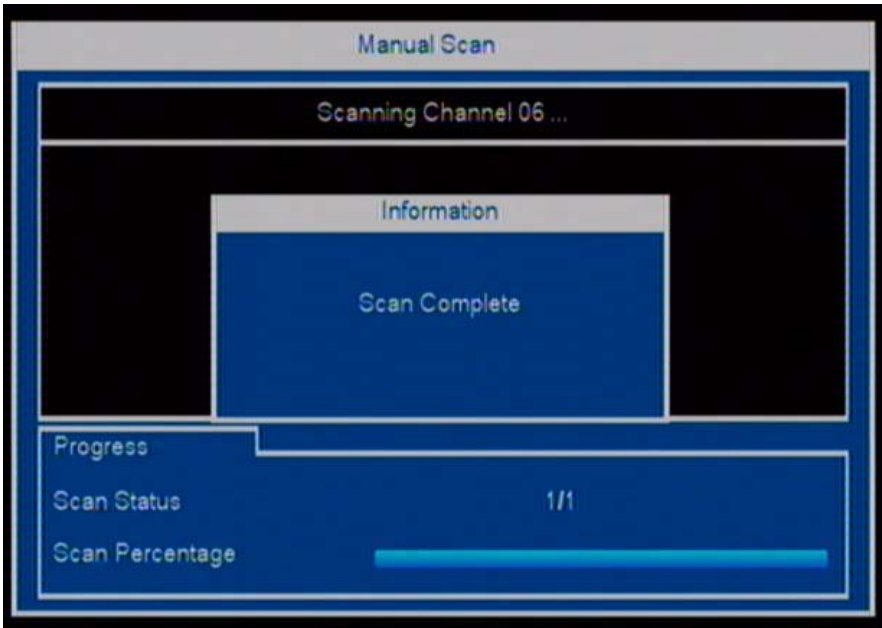
On the "Setup" menu, highlight "Auto Scan" and press **ENTER**. The frequency step is 7MHz in Australia. Press **ENTER** again to start channel search.



Once a digital TV/Radio channel is found, the channel number and the programme name will be displayed. "Scan Complete" shows after scanning is finished.

**Manual Scan:**

If you know the frequency of a local broadcaster you can conduct a Manual Scan. Input the Channel No., frequency step (7MHz for Australia) and Frequency, and select Start Scan to scan a specific channel.



“Scan Complete” shows after scanning is finished.

**Note:** These parameters vary between different regions. Please refer to the details provided by your local broadcast service.

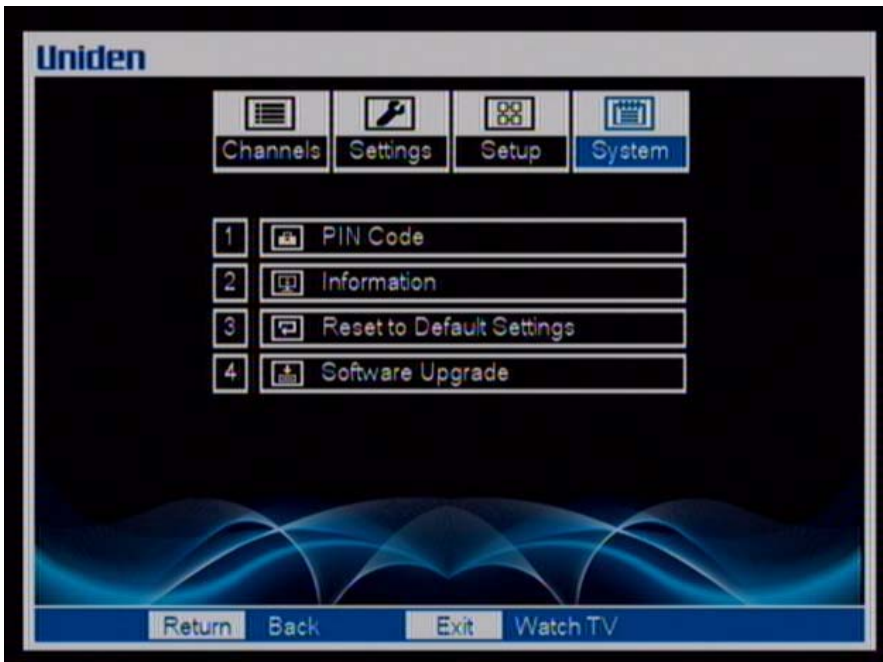
**Quick Scan:**

Select the region and press **ENTER** to start the channel search.



Once a digital TV/Radio channel is found, the channel number and the programme name will be displayed. “Scan Complete” shows after scanning is finished.

## System



### PIN Code:

The PIN Code setting menu allows you to change the 4 digit PIN Code for the HD6000 using the numeric keys (0-9).

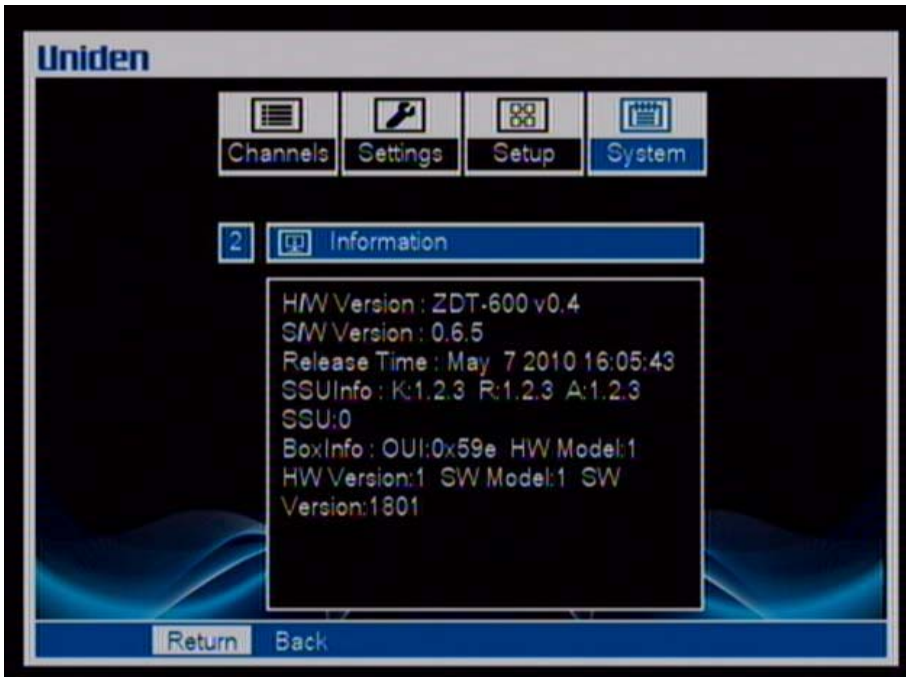


- Enter the Current PIN Code.
- Enter the New PIN Code.
- Confirm the new PIN Code.

**Note:** The default password of this receiver is 0000.

**Information:**

Select to view the System Information menu showing the current hardware version (H/W) and software version (S/W) of the HD6000.



**Set Defaults:**

Select to restore the factory default settings. All current settings and data will be eliminated.

**Note:** The default password of this receiver is 0000.



**Software Upgrade:**

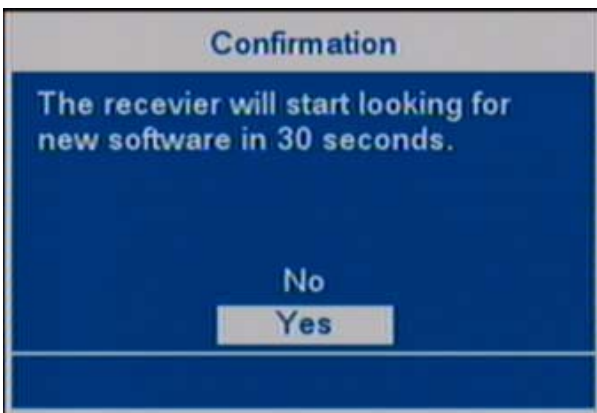
Software upgrades for the HD6000 may be available in future through OTA (Over the Air) broadcast. USB upgrade is not available for HD6000. Please contact your local distributor or visit the website; [www.uniden.com.au](http://www.uniden.com.au) for latest information.



**OTA Software Upgrade (Auto Upgrade Enable):**

The Auto Upgrade function is enabled from default. When there is a new SW available through OTA, the following message will appear onscreen. Please follow the onscreen instructions for SW upgrade.

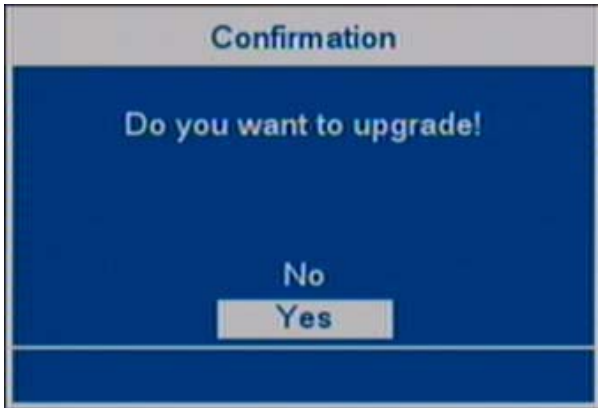
1. New SW available.



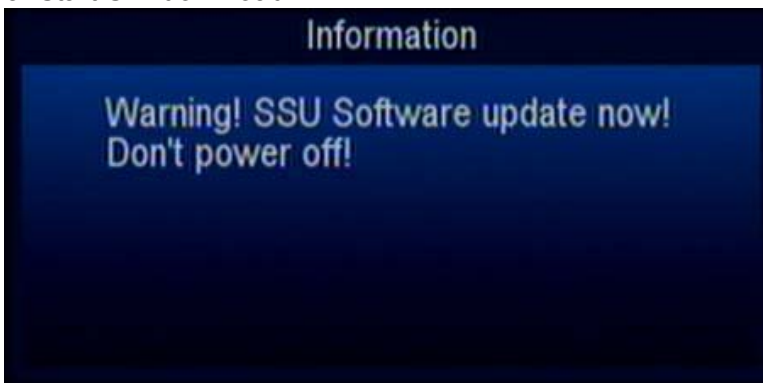
**NOTE**

*OTA Software Upgrade feature may not be available in all areas.*

2. Confirmation for SW update.



3. Start SW download.



4. Programming Flash (Don't power Off).



5. System will automatic restart after the software upgrade is completed (Don't power Off).



## Trouble Shooting

Problem	Solution
(1) The receiver front panel power indicator doesn't light up, and no message appears on the front panel.	<p>(a) Check the main lead and make sure the power plug is well plugged into a stable power outlet.</p> <p>(b) Press <b>POWER</b> button on the front panel to see if the green light (power indicator) is on.</p> <p>(c) Check the digital receiver is in "Standby" mode or not by pressing <b>STANDBY</b> on the remote control.</p>
(2) Some indication on the front panel but no picture on your TV screen.	<p>(a) Press <b>MENU</b> on the remote control or front panel to call up Receiving Tuning.</p> <p>(b) Make sure the connection between set top box and your TV matches the mode your TV is set to.</p> <p>(c) Check the brightness level of your TV is high enough.</p> <p>(d) Connect first via the composite video output and check if the selected video output matches the output connected to your screen.</p>
(3) Poor picture quality.	<p>(a) Check the antenna and make sure it is aligned in the correct direction.</p>
(4) No audio.	<p>(a) Check the receiver and your TV's volume are properly set and not in "MUTE" mode.</p> <p>(b) Check the audio connectors are correctly and firmly connected.</p> <p>(c) Make sure the receiver is switched to the correct Audio mode.</p>
(5) No video.	<p>(a) Check the receiver if the video connectors are correctly and firmly connected.</p> <p>(b) Try different video formats by pressing <b>V.FORMAT</b> on the remote control.</p>
(6) No teletext.	<p>(a) Make sure the channel you are watching carries teletext information.</p>
(7) Cannot lock signal.	<p>(a) Make sure your reception systems are correctly installed and connected correctly to the receiver.</p> <p>(b) Check whether the parameters you enter is exactly the center frequency of the wanted channel. Some parameters can be changed by operators. Make sure you have the most updated ones.</p>

\*Note: Please contact your local distributor for any technical problems.

**For assistance with this product contact the  
Toll Free Customer Support Number: 1300 366 895**

- **Weather related Signal problems**

Natural calamities may affect signal reception. If the terrestrial programming is severely affected by bad weather conditions, there are a few basic steps you can take to improve reception:

1. Make sure your antenna is aimed to receive the strongest possible signal.
2. If this does not solve the problem, you may consider installing a larger antenna. This can help to gather more of the signal transmission.
3. If you live in an area subject to frequent snow or freezing rain, you may need to install a deicing system to eliminate the accumulation of unwanted ice, snow or moisture from the surface of your antenna.
4. If the programme reception is adversely affected by heavy winds, you can stabilize the antenna mount with cables.

## Glossary

- \* **Aspect Ratio:** It is the ratio of the width of the screen to the height. The two relevant digital TV formats are 16:9 (wide screen) or 4:3 (the traditional screen ratio). 16:9 is ergonomically more suitable for the human eye.
- \* **AFD** Abbreviation for "Active Format Descriptor". A format code which can be used to send information about the "protected" area inside a widescreen picture which may be cut off for viewing on non-widescreen TV displays. Used for Aspect Ratio selections.
- \* **Composite Video:** There are three elements of the video system: First - the "active video" which means the picture to be displayed on the screen and its associated colors. Second - the "sync" decides where to place each pixel on the screen. Third - the "blanking" tells the display when to turn off the electron beam so no retrace across the screen. These three elements combined together is called "composite video" when connecting to a display through connectors.
- \* **DVB:** Abbreviation for "Digital Video Broadcasting". An international organization created in October 1993, whose primary objective is to achieve a common framework for all technical platforms of digital broadcasting systems including DVB-C (cable), DVB-S (satellite), DVB-T (terrestrial), DVB-MC (MMDS), DVB- CS (SMATV).
- \* **EPG:** Abbreviation for "Electronic Programme Guide".
- \* **Frequency:** The property of a signal which is measured in cycles per second (=Hertz).
- \* **Letterbox:** The picture with aspect ratio 16:9 in a 4:3 TV screen with blank lines on top and bottom. It is the means to watch a wide screen TV programme on a 4:3 TV screen.
- \* **OSD:** Abbreviation of "On Screen Display", used in digital set top box. OSD is comprised of a main menu and many submenus with lots of options of functions inside.
- \* **PAL:** Stands for "Phase Alternating Line", the European video standard which has the image format of 4 by 3, 625 horizontal lines, 50 Hz and a total 8 MHz of video channel width.

**\*HDMI:** High Definition Multimedia Interface transmits High Resolution uncompressed Video and Audio over a single cable between a Digital Receiver and a High Definition Television Display.

**\*HD:** High Definition Television (HDTV) offers wide-screen 16:9 television with HD broadcasts regularly including enhanced Surround Sound Audio. HDTV broadcasting is increasingly common in two variants: 720p and 1080i. 720p is a progressive system with 1280x720 Pixels in each frame. 1080i is an integrated system where the 1920x1080 Pixels are divided into two fields for more efficient transmission.

## Product Specification:

### Mechanical:

Size (WxHxD)mm	175mm x 34mm x 138mm
PCB Construction	4 Layers

### Power:

Input Voltage	DC 5V/3A
Consumption	Maximum 15W in operation, Less than 1 W in Standby Mode

### Front End:

Input Frequency	49 ~ 861 MHz / IEC-Female
Channel Bandwidth	7 / 8MHz
Standard / Demodulation	DVB-T / COFDM
Constellation	QPSK, 16QAM, 64QAM
FFT	2K, 8K
Guard Interval	1/4, 1/8, 1/16, 1/32
Code Rate	1/2, 2/3, 3/4, 5/6, 7/8
Loop Through Frequency	49 ~ 861 MHz / IEC-male

### System:

CPU	450 DMIPS
Flash Memory	16MB
RAM	256MB DDR

### Video:

Format	MPEG2 Main Profile@Main Level MPEG2 Main Profile@High Level MPEG4 Main Profile@Level 4.1
Picture Resolution	720 x 576i, 720 x 576p, 1280 x 720p, 1920 x 1080i
Video Signal/ Connector	Composite Video: CVBS x 1 HDMI x 1

### Audio:

Formats	MPEG1 Layer I, II, Dolby Digital, HE-AAC
Analog Audio Output	RCA Jack L/R x 2

### On Screen Display (OSD):

Number of Color	16 bit color
-----------------	--------------

### Front Panel:

Button Key	3 keys (Standby/On, CH+, CH-)
Front Panel Indicator	Red LED (Standby), Green LED (On)
Remote Control	40 Keys(NEC Code)

### General Data:

Operating Temperature	5C~ 40C
Storage Temperature	-40C ~ 65C

# One Year Limited Warranty

## ONE YEAR LIMITED WARRANTY

This product comes with a one year limited warranty. Please refer to our Uniden website for any details or warranty durations offered in addition to those contained below.

### UNIDEN HD6000 SET TOP BOX

**IMPORTANT:** Evidence of original purchase is required for warranty service.

**WARRANTOR:** Uniden Australia Pty Limited A.B.N. 58 001 865 498  
Uniden New Zealand Limited

**Warranty only available in original country of purchase.**

### ELEMENT OF WARRANTY:

Uniden warrants to the original retail owner for the duration of this warranty, its UNIDEN HD6000 SET TOP BOX (herein after referred to as the Product), to be free from defects in materials and craftsmanship with only the limitations or exclusions set out below.

### WARRANTY DURATION:

This warranty to the original retail owner only, shall terminate and be of no further effect ONE (1) year after the date of original retail sale.

This warranty will be deemed invalid if the Product is;

- (A) Damaged or not maintained as reasonable and necessary,
- (B) Modified, altered or used as part of any conversion kits, subassemblies, or any configurations not sold by Uniden,
- (C) Improperly installed,
- (D) Repaired by someone other than an authorized Uniden Repair Agent for a defect or malfunction covered by this warranty,
- (E) Used in conjunction with any equipment or parts or as part of a system not manufactured by Uniden, or
- (F) Where the Serial Number label of the product has been removed or damaged beyond recognition.

Warranty only valid in the country of original retail/sale.

### PARTS COVERED:

This warranty covers for one (1) year, the Product and included accessories.

### STATEMENT OF REMEDY:

In the event that the Product does not conform to this warranty at any time while this warranty is in effect, the warrantor at its discretion will repair the defect or replace the Product and return it to you without charge for parts or service. This warranty does not provide for reimbursement or payment of incidental or consequential damages.

This EXPRESS WARRANTY is in addition to and does not in any way affect your rights under the TRADE PRACTICES ACT 1974 (Cth) (Australia) or the CONSUMER GUARANTEES ACT (New Zealand).

### PROCEDURE FOR OBTAINING PERFORMANCE OR WARRANTY:

In the event that the Product does not conform to this warranty, the Product should be shipped or delivered, freight pre-paid, with evidence of original purchase (e.g. a copy of the sales docket), to the warrantor at:

**UNIDEN AUSTRALIA PTY LIMITED  
SERVICE DIVISION**  
345 Princes Highway, Rockdale NSW 2216  
Fx(02) 9599 3278  
Toll Free Customer Support Number:  
Ph 1300 366 895  
[www.uniden.com.au](http://www.uniden.com.au)

**UNIDEN NEW ZEALAND LIMITED  
SERVICE DIVISION**  
150 Harris Road, East Tamaki, Manukau 2013  
Fx(09) 274 4253  
[www.uniden.co.nz](http://www.uniden.co.nz)

Customers in other States should ship or deliver the Product freight pre-paid to their nearest Uniden Authorized Repair Centre (Contact Uniden for the nearest Warranty Agent to you).

**Uniden®**

© 2010 Uniden Australia Pty. Limited.  
Uniden New Zealand Limited. Printed in PRC.