

Start Here!

Quick Start Guide



DSS 2105

Optional Handset
and
Charge Base

Suits models -
DSS2115
DSS2155
DSS2165

QUICK START GUIDE

Uniden

INTRODUCTION

TO YOUR NEW PHONE

WELCOME

Congratulations on your purchase of the Uniden **DSS2105** cordless telephone. This phone is designed for reliability, long life and outstanding performance utilising the latest in 900 MHz Digital Spread Spectrum Technology.

COMPANY PHILOSOPHY

To bring outstanding wireless communication products to people's lives throughout the world.

FEATURES

- 1 900MHz Digital Spread Spectrum Technology
- 1 Alpha Display Caller ID
- 1 Backlit Keypad
- 1 Backlit LCD
- 1 POP ID - Caller Name Identification
- 1 60 Number Caller ID Memories
- 1 59 Alpha Numeric Speed Dial Memories
- 1 Rocket Dial - One Touch VIP Dial
- 1 3-Line, 16 Character Backlit Handset Display
- 1 32 Digit Redial
- 1 3 Redial Memories
- 1 Flash
- 1 Pause
- 1 4 Days Standby Battery Life
- 1 7.5 Hours Talk Time
- 1 Handset Earpiece and Ringer Volume Control
- 1 Hearing Aid Compatible

INCLUDED IN YOUR PACKAGE

- 1 Handset
- 1 Charge Cradle
- 1 Rechargeable Battery
- 1 AC Adaptor
- 1 Belt Clip
- 1 Owner's Manual
- 1 Consumer Support Card

NOTE

If any of these items are missing or damaged, contact your place of purchase.

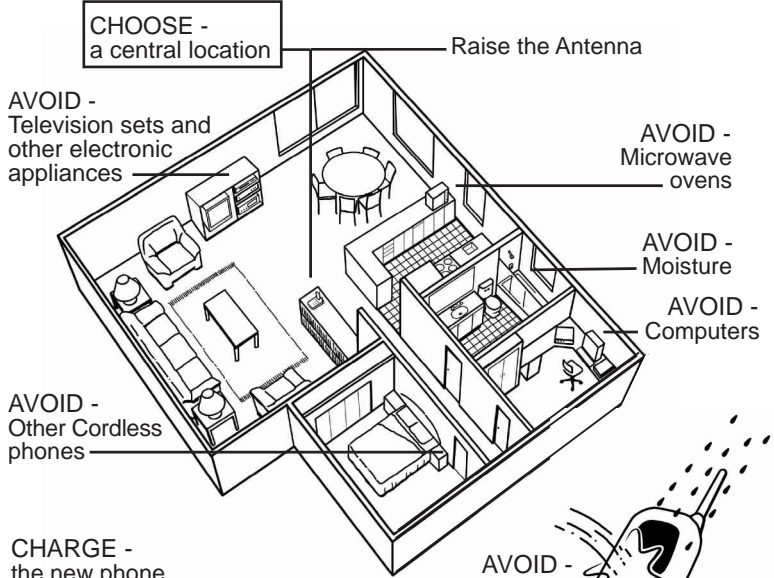
INSTALLATION & SAFETY



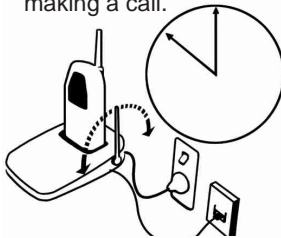
This symbol indicates important operating and servicing instructions.

Choosing the best location for your telephone

When choosing a location for your phone there are a number of appliances the phone should not be near, and areas you should avoid.



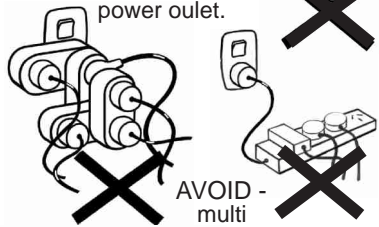
CHARGE -
the new phone
for 14 - 20 hrs
and raise the
antenna before
making a call.



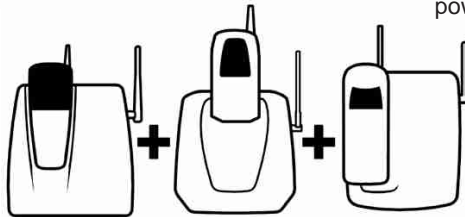
AVOID -
moisture



DON'T -
overload the
power outlet.



AVOID -
multi
power boards



AVOID -
connecting
more than

3
base unit telephones as
ringing may be impaired.

NOTE: Ringing will not be impaired by adding extra cordless handsets.

PRECAUTIONS

This page is a very condensed version of the Owners Manual. It is designed to allow you to get your phone installed and operating as quickly as possible - however it does not attempt to explain any of the advanced features of the DSS2105

Start Here!

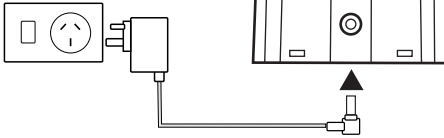
Quick Start Guide

1

Installing the Charge Base



*The AC Adaptor must remain plugged in and switched on at all times.
Use only the AC Adaptor supplied with this unit.*



- Plug the power cable into the Base Unit, then into the wall power point.
- Press the power cable into the curved recess under the Charge Base.

2

Installing the Handset Batteries

- Connect the battery plug to the socket at the rear of the battery compartment.

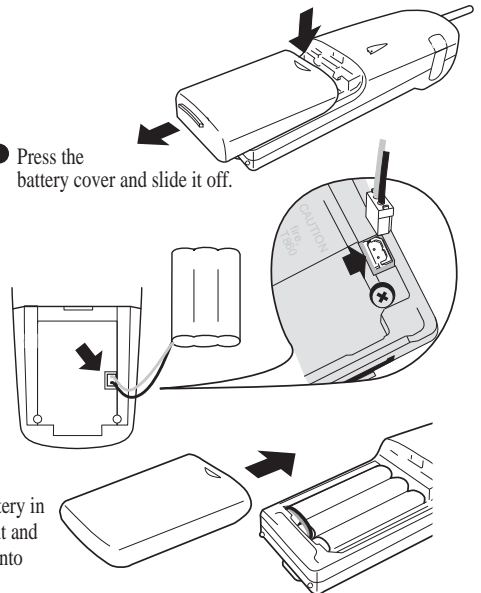
Make sure the plug is the right way round.

Press firmly until it clicks into place.



Place the handset on the Base Unit and charge it uninterrupted for 12 hours.

- Press the battery cover and slide it off.



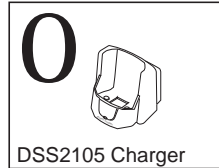
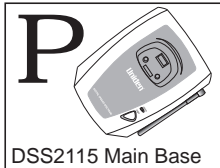
- Position the battery in the compartment and slide the cover into place.

3

Registering your phone

This additional Handset is able to be used in conjunction with models DSS2115, DSS2155 and DSS2165 cordless telephones.

The new handset needs to be allocated a handset number and registered to the **Main Base** (DSS2115, DS2155 and DSS2165). The Main Base has a telephone cord plugged into it and also has an Antenna, not to be confused with the additional charger(s).



The original handset supplied with the Main Base is already registered as handset 1, this leaves handset numbers 2 - 7 available. It is very important to allocate each handset a different number to enable functions such as Call Transfer.

Registration Process

Follow this process for each DSS2105 additional Handset that needs to be registered to the Main Base.

1. Remove the Handset from its charger
2. Press **(flash/reg)** on the Handset (Fig 1).
3. DSS2115 and DSS2155 - Press the number 2 (Fig.2) for Handset 2.
DSS2165 - Press the number 3 for Handset 3.



If you have additional Handsets, repeat the same process, but at Step 3, select the next Handset number.



Fig 1.



Fig 2.

4. Place the Handset in the Main Base Unit (Fig 3), make sure the in use/charge LED comes on.
5. Press and hold the Registration button located on the back of the Main Base unit near the DC power jack (Fig3). Hold the Registration button in until a long beep confirms the Handset has been registered.



The Registration process needs to be completed within 15 seconds, 5 beep tones will indicate that the time has been exceeded. Please start the process again.

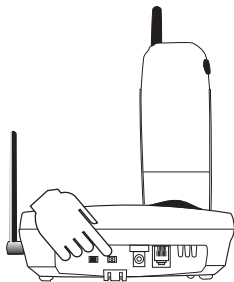


Fig 3.

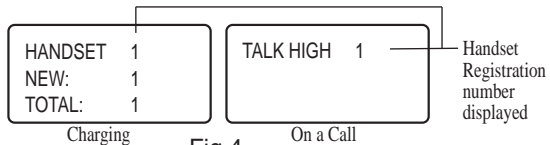


Fig 4.



After Registration the Handset number is shown on the Display Screen either during a call or while the Handset is charging (Fig 4).



If a handset is registered at any time as Handset 1, all other Handsets will need to be registered again from Step 1.

BATTERY MAINTENANCE

NOTE

Use only the genuine Uniden Battery supplied with your phone. Replacement batteries are also available through the Uniden Parts Department.

NOTE

The built-in memory backup can hold numbers and names stored in the memory even if the battery pack is completely discharged.

Battery use time (per charge)

From fully charged

- 7.5 hours continuous use.
- 4 days when the Handset is in the standby mode.
- A full charge will take at least 12 hours if 'Battery Low' is displayed - however the phone will be ready for a short call after one hour.

When the battery charge becomes low

If the phone is not in use, "Low Battery" flashes and none of the keys will operate if the phone is in use, "Low Battery" flashes and the Handset beeps. Complete your conversation as quickly as possible and return the handset to the base unit for charging.



Low Battery

- You cannot over charge the battery.
- You may return the Handset to the charger after each call or when the battery is low.

Genuine handset batteries

The high quality rechargeable batteries supplied with your phone perform for up to two years or more. In order to enjoy the best performance from your phone, we recommend you replace your batteries every two years with a genuine Uniden Battery. Simply order a replacement battery from:

Uniden Australia PTY Limited

Service Division
Toll Free: 1300 366 895
www.uniden.com.au

Uniden New Zealand Limited

Service Division
Toll Free: 0800 4 UNIDEN (0800 4 864 336)
www.uniden.co.nz

Cleaning the battery contacts

To maintain a good charge, it is important to clean the battery contacts on the handset and base unit with a dry cloth or a pencil eraser about once a month.

Do not use any liquids or solvents.

WARRANTY

One Year Limited Warranty

Important: Evidence of original purchase is required for warranty service.

Warrantor: Uniden Australia Pty Limited ABN 58 001 865 498
Uniden New Zealand Limited

ELEMENT OF WARRANTY: Uniden warrants to the original retail owner for the duration of this warranty, its DSS2105 (herein after referred to as the Product), to be free from defects in materials and craftsmanship with only the limitations or exclusions set out below. Warranty only available in the original country of sale.

WARRANTY DURATION: This warranty to the original retail owner only, shall terminate and be of no further effect 12 months after the date of original retail sale. This warranty will be deemed invalid if the product is; (A) Damaged or not maintained as reasonable and necessary, (B) Modified, altered or used as part of any conversion kits, subassemblies or any configurations not sold by Uniden, (C) Improperly installed, (D) Repaired by someone other than an authorised Uniden Repair Agent for a defect or malfunction covered by this warranty, (E) Used in conjunction with any equipment or parts or as part of a system not manufactured by Uniden.

PARTS COVERED: This warranty covers for one (1) year, the Base/Charging Unit and Handset only. All accessories (AC Adaptor, battery etc.) are covered for 90 days only.

STATEMENT OF REMEDY: In the event that the product does not conform to this warranty at any time while this warranty is in effect, the warrantor at its discretion, will repair the defect or replace the product and return it to you without charge for parts or service. **THIS WARRANTY DOES NOT COVER OR PROVIDE FOR THE REIMBURSEMENT OR PAYMENT OF INCIDENTAL OR CONSEQUENTIAL DAMAGES. THIS GUARANTEE IS IN ADDITION TO AND DOES NOT IN ANY WAY AFFECT YOUR RIGHTS UNDER THE CONSUMER GUARANTEE ACT.**

PROCEDURE FOR OBTAINING PERFORMANCE OR WARRANTY: In the event that the product does not conform to this warranty, the Product should be shipped or delivered, freight pre-paid, with evidence of original purchase (eg. a copy of the sales docket), to the warrantor at:

UNIDEN AUSTRALIA PTY LIMITED
SERVICE DIVISION
345 Princes Highway,
Rockdale NSW 2216
Ph (02) 9599 3577 Fx (02) 9599 3278
Ph: 1300 366 895

www.uniden.com.au

UNIDEN NEW ZEALAND LIMITED
SERVICE DIVISION
150 Harris Road,
East Tamaki, Auckland
Ph (09) 273 8377 Fx (09) 274 4253
Ph: 0800 4 UNIDEN
(864 336)

www.uniden.co.nz

Customers in other States should ship or deliver the Product freight pre-paid to their nearest Uniden Authorised Repair Centre. See Uniden's Website for the nearest Repair Centre.

THANK YOU

FOR PURCHASING A UNIDEN PHONE!

Uniden

© 2003 Uniden Australia Pty Limited
Uniden New Zealand Limited